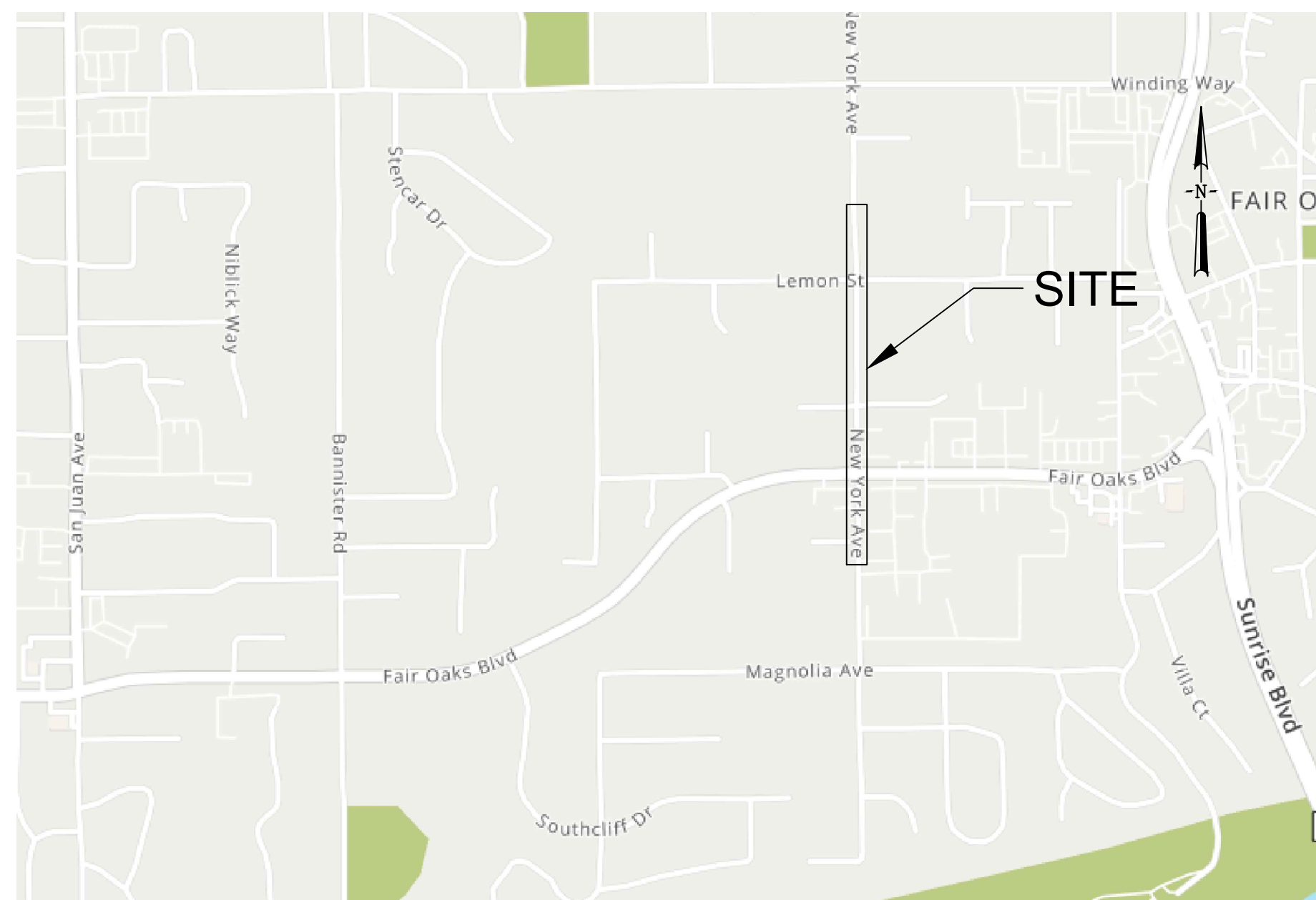


FAIR OAKS WATER DISTRICT

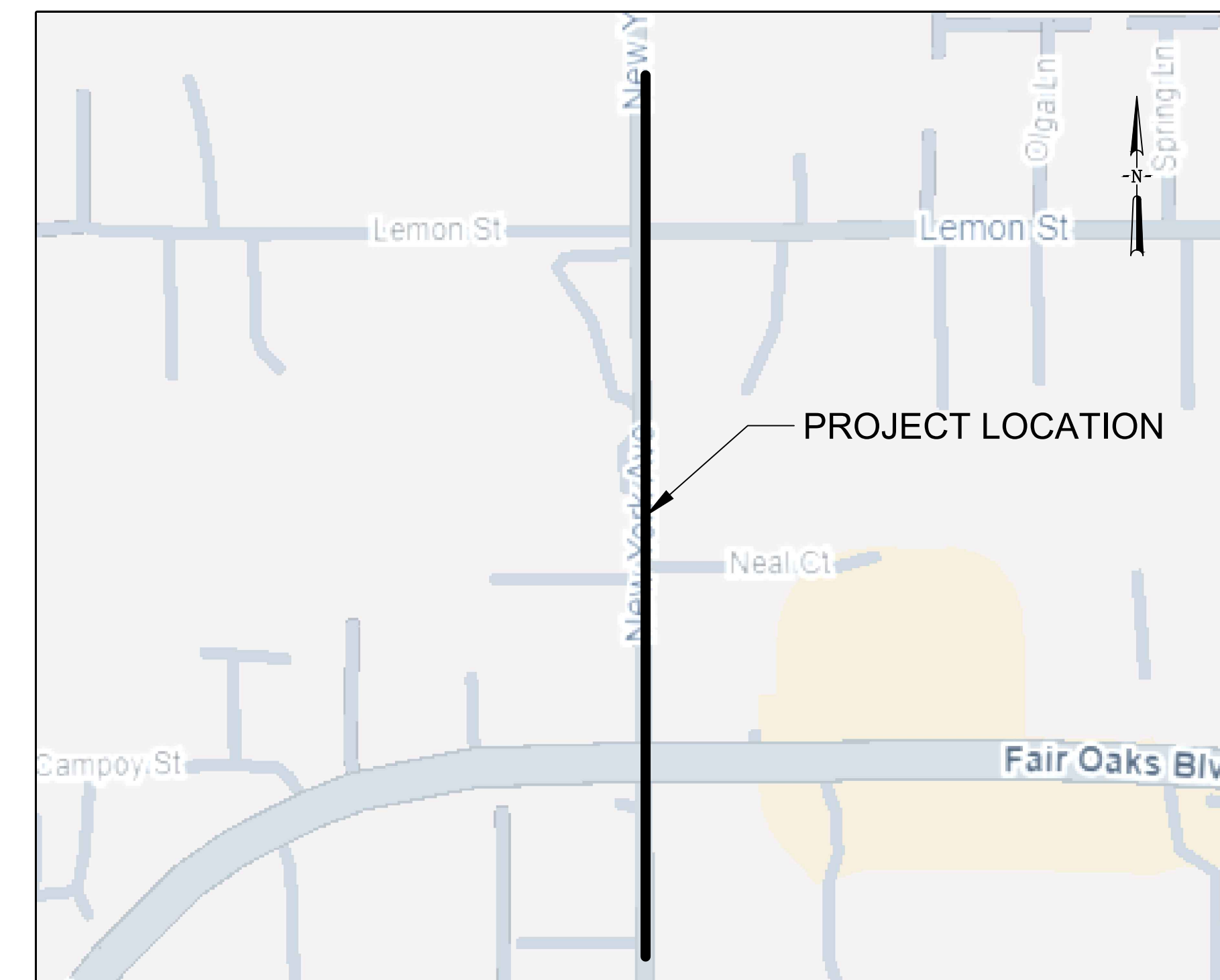
FAIR OAKS, CALIFORNIA

NEW YORK AVENUE PHASE II - 12" WATER MAIN REPLACEMENT PROJECT PROJECT NO. C26TDNYASW2



VICINITY MAP

NOT TO SCALE



PROJECT LOCATION MAP

NOT TO SCALE

BOARD OF DIRECTORS	
DIRECTOR DIVISION (X)	
RANDY MARX	PRESIDENT (4)
MARK DOLBY	VICE PRESIDENT (3)
MISHA SARKOVICH	DIRECTOR (5)
GEORGE BABCOCK	DIRECTOR (2)
CHRIS PETERSON	DIRECTOR (1)

SURVEY BENCHMARK:
THE HORIZONTAL DATUM FOR THIS SURVEY IS THE CALIFORNIA COORDINATE SYSTEM, ZONE 2 NAD83 (EPOCH 2010.0) AS DETERMINED LOCALLY BETWEEN CONTINUOUS OPERATING STATIONS (CORS) DERIVED FROM GEODETIC VALUES PUBLISHED BY THE NATIONAL GEODETIC SURVEY (NGS). TO OBTAIN GROUND COORDINATES, A SCALE FACTOR OF 1.0000602524 CAN BE APPLIED TO THE COORDINATES M1996066.433, E6767899.125.
A SCRIBED "X" (EL=181.17) ON A CONCRETE PAD WITH A FIRE HYDRANT LOCATED APPROXIMATELY 230 FEET SOUTH OF MONAL COURT ON THE WEST SIDE OF NEW YORK AVENUE, IS BASED ON THE NORTH AMERICAN VERTICAL DATUM OF 1988 (NAVD88) AS DETERMINED LOCALLY BETWEEN CONTINUOUS OPERATING STATIONS (CORS) DERIVED FROM GEODETIC VALUES PUBLISHED BY THE NATIONAL GEODETIC SURVEY (NGS).

USA NORTH



Know what's below.
Call before you dig.

811/800 227-2600

ENCROACHMENT PERMIT:
#TBD

INDEX OF DRAWINGS	
TITLE SHEET, LOCATION, AND SHEET INDEX	SHEET 1 OF 7
GENERAL NOTES AND ABBREVIATIONS	SHEET 2 OF 7
PLAN-PROFILE STA. 1+25.63 TO STA. 9+17.67	SHEET 3 OF 7
PLAN-PROFILE STA. 9+17.67 TO STA. 16+50.76	SHEET 4 OF 7
POINT OF CONNECTION DETAILS	SHEET 5 OF 7
FOWD STANDARD DRAWINGS	SHEET 6 OF 7
PAVING PLAN STA. 1+25.63 TO 16+50.76	SHEET 7 OF 7

UTILITY CONTACTS		
PUBLIC / UTILITY SERVICE	REPRESENTATIVE	PHONE
SACRAMENTO COUNTY (TRAFFIC SIGNAL)	CHEN VANG	916-875-5745
SACRAMENTO AREA SEWER DISTRICT	ERIC SCHOLTZ	916-876-6065
PG&E (GAS)	STEVE LIMA	916-203-2572
SMUD (ELECTRIC)	JOSEPH DICKSON	916-732-5889
COMCAST	PETER HEMINGWAY	916-617-4836
AT&T	ANNA SANTOS	916-484-2416
MCI WORLDCOM	VICTOR WOOD	800-624-9675
FAIR OAKS WATER DISTRICT	BLAKE CHETCUTI	916-844-3520

INSTALLATION CHART	
QUANTITY	DESCRIPTION
1525 ±LF	12" DIP WATER MAIN, CLASS 350
22 ±LF	10" DIP WATER MAIN, CLASS 350
77 ±LF	8" DIP WATER MAIN, CLASS 350
48 ±LF	6" DIP WATER MAIN, CLASS 350
24 ±LF	4" DIP WATER MAIN, CLASS 350
23 EA	12" GATE VALVE
3 EA	8" GATE VALVE
7 EA	6" GATE VALVE
1 EA	4" GATE VALVE
2 EA	1" ARV
1 EA	4" BLOW OFF
5 EA	6" FIRE HYDRANT
7 EA	1" WATER SERVICES
3 EA	1.5" WATER SERVICES
1 EA	2" WATER SERVICES

RETIREMENT CHART	
QUANTITY	DESCRIPTION
1529 ±LF	12" STEEL WATER MAIN
86 ±LF	10" & 8" & 6" WATER MAIN (VARIOUS TYPES)
4 EA	FIRE HYDRANT
11 EA	WATER SERVICE (VARIOUS SIZES)
12 EA	GATE VALVES (VARIOUS SIZES)
2 EA	ARV (VARIOUS SIZES)

APPROVED BY:
Blake Chetcuti 4/29/26
FAIR OAKS WATER DISTRICT DATE
EXPIRES 1 YEAR FROM DATE OF SIGNATURE.

ISSUED FOR BID

FOWD GENERAL MANAGER - TOM R. GRAY



FAIR OAKS WATER DISTRICT
10326 FAIR OAKS BLVD.,
FAIR OAKS, CA 95628
(916) 967-5723

DESIGNED BY: DL			
DRAFTED BY: DL			
CHECKED BY: BC			
DATE: 04/16/2026	REV.	DATE	DESCRIPTION

NEW YORK AVENUE PHASE II - 12" WATER MAIN REPLACEMENT PROJECT

SCALE
HOR: NONE
VERT: NONE

SHEET NUMBER 1
OF 7 SHEETS
PROJECT NUMBER C26TDNYASW2

DEPARTMENT OF WATER RESOURCES CONSTRUCTION NOTES:

PRIOR TO COMMENCEMENT OF ANY WORK IMPACTING OR LOCATED NEAR EXISTING DRAINAGE FACILITIES, THE CONTRACTOR SHALL FIELD VERIFY THE LOCATION AND DEPTH OF ALL STORM DRAIN SYSTEMS WITHIN AND ADJACENT TO THE PROJECT LIMITS. A MINIMUM HORIZONTAL SEPARATION OF 4 FEET AND A MINIMUM VERTICAL SEPARATION OF 12 INCHES FROM THE NEAREST SIDE OF ANY STORM DRAIN FACILITY SHALL BE MAINTAINED UNLESS OTHERWISE APPROVED BY THE COUNTY OF SACRAMENTO DEPARTMENT OF WATER RESOURCES.

WHEN TUNNELING OR TRENCHING UNDER EXISTING STORM DRAIN PIPE, CONTROL DENSITY BACKFILL SHALL BE USED IN ACCORDANCE WITH SECTION 50-15 OF THE SACRAMENTO COUNTY STANDARD CONSTRUCTION SPECIFICATIONS (SEPTEMBER 2001; REVISED MARCH 2004, JANUARY 2008, JANUARY 1, 2016, AND NOVEMBER 1, 2024).

ALL DRAIN INLETS WITHIN THE PROJECT LIMITS AND ANY DOWNSTREAM INLETS POTENTIALLY IMPACTED BY CONSTRUCTION SHALL BE PROTECTED IN ACCORDANCE WITH SACRAMENTO COUNTY STANDARD CONSTRUCTION SPECIFICATIONS.

IF DAMAGE TO ANY DRAINAGE FACILITY IS DISCOVERED OR OCCURS DURING CONSTRUCTION, THE CONTRACTOR SHALL IMMEDIATELY NOTIFY THE SACRAMENTO COUNTY DRAINAGE MAINTENANCE ENGINEERING OFFICE BY CALLING 311 AND INFORM THE PROJECT INSPECTOR. THE CONTRACTOR IS RESPONSIBLE FOR ALL REPAIRS, WHICH SHALL BE COMPLETED IN COMPLIANCE WITH CURRENT COUNTY STANDARDS.

THE CONTRACTOR SHALL INSPECT ALL ACCESS ROADS AND GUTTERS ON A DAILY BASIS. SEDIMENT AND CONSTRUCTION-RELATED DEBRIS SHALL BE REMOVED DAILY, PRIOR TO RAIN EVENTS, OR AS DIRECTED BY THE INSPECTOR BY MEANS OF VACUUMING OR SWEEPING.

A HAUL ROUTE PLAN AND IDENTIFICATION OF SOIL EXPORT DESTINATION LOCATIONS SHALL BE INCLUDED IN THE PROJECT SUBMITTAL. GRADING PERMITS MAY BE REQUIRED FOR SOIL DISPOSAL SITES.

NPDES PERMIT & STORMWATER QUALITY NOTES:

CONTRACTOR SHALL DEVELOP AND IMPLEMENT A WATER POLLUTION CONTROL PROGRAM (WPCP) IN ACCORDANCE WITH SACRAMENTO COUNTY REQUIREMENTS. UNLESS SPECIFICALLY AUTHORIZED IN WRITING, NO GROUND-DISTURBING ACTIVITY (INCLUDING POTHOLE WORK, CLEARING, GRUBBING, DIRECTIONAL BORING OR DRILLING) MAY BEGIN WITHOUT AN APPROVED WPCP.

THE WPCP SHALL BE KEPT ON-SITE AT ALL TIMES AND MADE AVAILABLE TO COUNTY STAFF UPON REQUEST. FAILURE TO IMPLEMENT OR MAINTAIN THE WPCP MAY RESULT IN ENFORCEMENT ACTION, INCLUDING STOP WORK ORDERS.

THE WPCP SHALL INCLUDE:

1. SITE MAP SHOWING STORM DRAINS, WATER LINES (WITH CONTACT INFO), SOIL STOCKPILES, WASTE CONTAINERS, FUELING AND EQUIPMENT AREAS, MATERIAL STORAGE, BMPs, SITE DRAINAGE FLOW, STABILIZED ACCESS POINTS, AND CONCRETE WASHOUT AREAS.
2. A LIST OF ALL CHEMICALS, HAZARDOUS MATERIALS, AND POTENTIAL POLLUTANTS USED (E.G., DRILLING FLUIDS, PAINT REMOVERS).
3. BMP DRAWINGS, DESCRIPTIONS, AND METHODS FOR DEWATERING, STREET CLEANING, RUNOFF MANAGEMENT, FRACK-OUT CONTROL, SPILL PREVENTION, EQUIPMENT CONTAINMENT, WASTE HANDLING, CHEMICAL STORAGE, FUEL HANDLING, CONCRETE DISPOSAL, BMP MAINTENANCE, AND SANITATION.
4. METHODS FOR FINAL SITE STABILIZATION.
5. A SCHEDULE FOR BMP IMPLEMENTATION, MAINTENANCE, AND REMOVAL.

SEWER DISTRICT CLEARANCE NOTES:

THE CONTRACTOR SHALL MAINTAIN A MINIMUM HORIZONTAL CLEARANCE OF 10 FEET FROM ALL SEWER FACILITIES. CROSSINGS ABOVE OR BELOW SEWER FACILITIES SHALL MAINTAIN A MINIMUM VERTICAL SEPARATION OF 12 INCHES. NOTE: PER STATE HEALTH & SAFETY CODE, A MINIMUM 10-FOOT HORIZONTAL CLEARANCE IS REQUIRED BETWEEN ALL WATER MAINS AND SEWER FACILITIES. FIELD VERIFICATION SHALL BE COMPLETED PRIOR TO CONSTRUCTION TO ENSURE COMPLIANCE.

SURVEY INFORMATION:

THE HORIZONTAL DATUM FOR THIS SURVEY IS THE CALIFORNIA COORDINATE SYSTEM, ZONE 2 NAD 83 (EPOCH 2010.0) AS DETERMINED LOCALLY BETWEEN CONTINUOUS OPERATING REFERENCE STATIONS (CORS) DERIVED FROM GEODETIC VALUES PUBLISHED BY THE NATIONAL GEODETIC SURVEY (NGS).

THE VERTICAL DATUM FOR THIS SURVEY IS THE NORTH AMERICAN VERTICAL DATUM OF 1988 (NAVD 88) AS DETERMINED LOCALLY BETWEEN CONTINUOUS OPERATING REFERENCE STATIONS (CORS) DERIVED FROM GEODETIC VALUES PUBLISHED BY THE NATIONAL GEODETIC SURVEY (NGS).

ALL CONTROL POINTS SHALL BE PROTECTED AND MAINTAINED THROUGHOUT CONSTRUCTION. ANY CONTROL POINT DISTURBED OR DESTROYED SHALL BE RE-ESTABLISHED BY A LICENSED SURVEYOR PRIOR TO CONTINUING WORK.

POTHOLE INSTRUCTION NOTES:

PRIOR TO BEGINNING CONSTRUCTION OF PROPOSED WATER FACILITIES, THE CONTRACTOR SHALL POTHOLE THE EXISTING UTILITIES SHOWN ON THESE PLANS AND THE UTILITIES MARKED BY USA. CONTRACTOR SHALL COORDINATE TIMING OF THE POTHOLE WORK WITH FAIR OAKS WATER DISTRICT(FOWD). FOWD SHALL BE NOTIFIED TWO (2) WORKING DAYS PRIOR TO POTHOLING.

TRAFFIC CONTROL PLAN NOTES:

A TRAFFIC CONTROL PLAN SHALL BE PREPARED BY THE CONTRACTOR AND SUBMITTED TO SACRAMENTO COUNTY CONSTRUCTION MANAGEMENT AND INSPECTION DIVISION FOR REVIEW AND APPROVAL PRIOR TO COMMENCEMENT OF ANY WORK. AN ENCROACHMENT PERMIT OR PLAN APPROVAL MUST FIRST BE OBTAINED PRIOR TO ANY WORK COMMENCING WITHIN THE COUNTY RIGHT-OF-WAY.

FAIR OAKS WATER DISTRICT – GENERAL NOTES

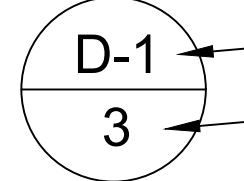
REVISED: APRIL 2023

1. THESE NOTES APPLY TO THE CONSTRUCTION OF PUBLIC WATER FACILITIES WITHIN THE FAIR OAKS WATER DISTRICT (FOWD) SERVICE AREA. ALL WORK SHALL BE PERFORMED IN ACCORDANCE WITH THE FOWD APPROVED IMPROVEMENT PLANS AND THE MOST RECENT VERSION OF THE FOWD'S STANDARD SPECIFICATIONS MANUAL.
2. IMPROVEMENT PLANS APPROVAL – FOWD'S APPROVAL IS VALID FOR A PERIOD OF ONE (1) YEAR FROM THE DATE OF SIGNATURE. PLANS SHALL BE SUBJECT TO REVIEW AND RE-APPROVAL THEREAFTER. THE CONTRACTOR SHALL NOTIFY FOWD IMMEDIATELY IN WRITING OF ANY FIELD CHANGES, OR CHANGES TO THE APPROVED PLANS, THAT MAY IMPACT INSTALLATION OF WATER FACILITIES, AND SHALL OBTAIN WRITTEN APPROVAL FROM FOWD FOR SUCH CHANGES PRIOR TO CONSTRUCTION. IMPROVEMENT PLANS SHALL BE APPROVED BY THE SACRAMENTO METRO FIRE DEPARTMENT AND ANY NECESSARY EASEMENT/S RECORDED PRIOR TO FOWD'S APPROVAL.
3. PRE-CONSTRUCTION MEETING – A PRE-CONSTRUCTION MEETING IS REQUIRED WITH FOWD AND THE CONTRACTOR (AND SACRAMENTO COUNTY INSPECTOR WHEN APPLICABLE) A MINIMUM OF FIVE (5) BUSINESS DAYS PRIOR TO COMMENCING WORK.
4. EXISTING FACILITIES AND PRE-WORK SITE CONDITIONS – THE CONTRACTOR SHALL BE RESPONSIBLE FOR SITE MARKING AND UNDERGROUND SERVICE ALERT (USA) PRIOR TO BEGINNING ANY WORK. THE CONTRACTOR SHALL BE RESPONSIBLE FOR PHYSICALLY LOCATING, INCLUDING POTHOLING, ALL EXISTING UTILITIES AND WATER LINE CONNECTION POINTS TO CONFIRM SIZE, DEPTH, AND MATERIAL TYPE OF EXISTING FACILITIES BEFORE THE START OF WATER FACILITIES INSTALLATION.
5. SAFETY – CONTRACTOR IS SOLELY RESPONSIBLE FOR ANY CURRENTLY APPLICABLE SAFETY LAW AND PRIOR APPROVALS OF ANY JURISDICTIONAL AGENCY, INCLUDING TRAFFIC CONTROL, SLOPING, BORING, AND SHORING. CONTRACTOR IS ALSO RESPONSIBLE FOR PROJECT SITE SAFETY AND FOR PUBLIC SAFETY INCLUDING TRAFFIC CONTROL, 24 HOURS/DAY FOR ALL DAYS, FROM THE NOTICE TO PROCEED THROUGH THE NOTICE OF FINAL COMPLETION.
6. PERMITTING – CONTRACTOR IS RESPONSIBLE TO VERIFY ACQUISITION AND SUBMITTAL OF, AND COMPLIANCE WITH, ANY APPLICABLE PERMITS, INCLUDING BUT NOT LIMITED TO SWPPP, NPDES, ENCROACHMENT PERMITS, AND REQUIRED CERTIFICATES/PERMIT FOR WORKING WITH ASBESTOS CEMENT MATERIALS, FOR EXCAVATION DEEPER THAN 5 FEET, AND FOR ACTIVITIES TO BE PERFORMED IN CONFINED SPACES.
7. NOTIFICATIONS – THE CONTRACTOR SHALL CONTACT FOWD AT (916) 967-5723 A MINIMUM OF TWO (2) BUSINESS DAYS PRIOR TO THE BEGINNING OF WORK OR TO SCHEDULE ANY MEETING.
8. TRAFFIC CONTROL – CONTRACTOR IS RESPONSIBLE FOR PROVIDING TRAFFIC CONTROL PLAN APPROVED BY SACRAMENTO COUNTY (IF NEEDED) AND ANY TRAFFIC CONTROL NECESSARY FOR CONSTRUCTION OF WATER SYSTEM IMPROVEMENTS.
9. SUBMITTALS AND BASELINE SCHEDULE – BEFORE THE WORK PROCEEDS, THE CONTRACTOR SHALL PROVIDE FOWD WITH SUBMITTALS FOR ALL PARTS AND MATERIALS TO BE USED IN CONSTRUCTION. ALL SUBMITTALS MUST BE APPROVED BY FOWD PRIOR TO INSTALLATION. AWWA AND/OR NSF CERTIFICATIONS ARE REQUIRED FOR ALL WATER MATERIAL. CONTACT FOWD TWO BUSINESS DAYS TO ARRANGE FOR REVIEW AND INSPECTION OF MATERIALS PRIOR TO INSTALLATION. CONTRACTOR SHALL PROVIDE A BASELINE SCHEDULE INCLUDING MAJOR ACTIVITIES FROM BEGINNING OF THE PROJECT TILL THE END. SCHEDULE TO BE UPDATED PER FOWD DIRECTION.
10. FEES – IF APPLICABLE, THE CONTRACTOR MUST PAY ALL ASSOCIATED WATER FEES PRIOR TO THE IMPROVEMENT PLAN APPROVAL BY FOWD.
11. SURVEYING AND MONUMENTS PROTECTION – THE CONTRACTOR IS RESPONSIBLE FOR ALL REQUIRED STAKING, SHOWING THE LOCATION AND GRADES FOR INSTALLING ALL WATER FACILITIES PRIOR TO THEIR INSTALLATION. THE CONTRACTOR SHALL BE RESPONSIBLE FOR PROTECTING AND MAINTAINING ALL SURVEY MONUMENTS AND RESTORING ANY MONUMENTS DAMAGED BY CONTRACTOR.
12. GRADING – WATER MAINS, SERVICES, METERS, AND METER BOXES SHALL NOT BE INSTALLED UNTIL THE FINISHED GRADE IS ESTABLISHED. THE CONTRACTOR IS FULLY RESPONSIBLE FOR ANY WATER FACILITIES ADJUSTMENTS DUE TO ERRORS IN ESTABLISHING FINISHED GRADE.
13. WATER MAIN LOCATION AND EASEMENT – WATER MAINS SHALL BE INSTALLED WITHIN PUBLIC STREET RIGHT OF WAY (ROW) AND SHALL BE LOCATED 3 FEET FROM THE LIP OF GUTTER (UNDER STREET PAVEMENT). WATER MAINS INSTALLED ON PRIVATE PROPERTY/ROAD SHALL BE PLACED AT THE CENTERLINE OF A 20-FOOT WIDE WATER EASEMENT, OR AS APPROVED BY FOWD, BUT NEVER LESS THAN 10 FEET WIDE. EASEMENT(S) MUST BE ADOPTED AND RECORDED WITH SACRAMENTO COUNTY BEFORE WATER SERVICE IS TURNED ON. PLANTING OF TREES AND SHRUBS WITHIN WATER EASEMENTS FOR EXISTING OR PROPOSED FUTURE WATER FACILITIES SHALL BE AVOIDED. FOWD RESERVES THE RIGHTS TO REQUIRE REMOVAL (AT CONTRACTOR EXPENSE) OF TREES AND SHRUBS OR ANY OTHER OBSTACLES THAT MAY IMPACT, OR HAVE IMPACTED, WATER FACILITIES INSTALLATION, MAINTENANCE, OR OPERATIONS.
14. TRACER WIRE & CAUTION TAPE – ALL WATER MAINS, HYDRANT RUNS, AND WATER SERVICE 3-INCH AND LARGER IN SIZE SHALL HAVE #10 AWG, CONTINUOUS SINGLE STRAND COATED COPPER TRACER WIRE AND 12" WIDE NON-DETECT BLUE TAPE WITH WORDS "CAUTION: BURIED WATER LINE BELOW" 12"-18" ON ALL WATER PIPING ON BEDDING PER FOWD STD-5.
15. PROTECTION OF WATER MAINS INSTALLATION AND VALVES OPERATION – CONTRACTOR MUST SEAL PIPE ENDS WATERTIGHT AT END OF EACH WORKDAY WHEN LAYING WATER PIPE. CONTRACTOR SHALL NOT OPERATE FOWD VALVES.
16. WATER SERVICE – EACH SINGLE FAMILY OR CONDO PARCEL SHALL HAVE A SEPARATE SERVICE TAP. APARTMENT AND OTHER COMMERCIAL DEVELOPMENT ON ONE PARCEL HAVE THE OPTIONS: A) TO HAVE ONE OR TWO MASTER METERS THAT PROVIDES DOMESTIC WATER TO THE ENTIRE PARCEL. B) HAVE DEDICATED DOMESTIC WATER SERVICES TO INDIVIDUAL BUILDINGS. APARTMENT AND OTHER COMMERCIAL DEVELOPMENT SHALL HAVE A DEDICATED IRRIGATION SERVICE. APARTMENT AND OTHER COMMERCIAL DEVELOPMENT SHALL HAVE A DEDICATED FIRE SERVICE(S) AS REQUIRED BY THE SACRAMENTO METRO FIRE DEPARTMENT. WATER SERVICES ON THE SAME PARCEL OF DIFFERENT CLASSIFICATIONS (DOMESTIC, IRRIGATION, AND FIRE) SHALL NOT BE LOOPED TOGETHER. ALL WATER SERVICES SERVING COMMERCIAL, GOVERNMENTAL, PUBLIC, IRRIGATION, PRIVATE FIRE PROTECTION SYSTEMS, AND RESIDENTIAL FACILITIES WITH FIRE SUPPRESSION SYSTEMS, SHALL BE EQUIPPED WITH FOWD APPROVED BACKFLOW DEVICES. PRIVATE WATER SERVICES SHALL NOT CROSS PARCEL LINES. WATER METER SHALL BE INSTALLED PRIOR TO ACCEPTANCE AND ACTIVATION OF WATER SYSTEM.
17. WATER SERVICES LOCATIONS – ALL WATER SERVICES SHALL BE SET THREE (3) FEET FROM ADJACENT SIDE PROPERTY LINES WITHIN STREET ROW, PUE, OR DEDICATED WATER EASEMENT ON THE CORRECT LOT SITE UNLESS OTHERWISE APPROVED BY FOWD. CONTRACTOR SHALL STAKE LOT LINES PRIOR TO INSTALLATION AND AT THE TIME OF FINAL INSPECTION. SERVICES ARE TO BE INSTALLED SO PLUMBERS NEED NOT DISTURB THE METER BOX DURING CUSTOMER HOOK-UP. WATER BOXES THAT ARE TEMPORARILY REMOVED SHALL BE REPLACED BY THE CONTRACTOR AT THEIR EXPENSE. INSTALLATION OF WATER METER BOXES WITHIN SIDEWALKS OR DRIVEWAYS ARE NOT ALLOWED UNLESS APPROVED BY FOWD.
18. BACKFLOW PROTECTION – BACKFLOW PREVENTION DEVICE SHALL BE REDUCED PRESSURE PRINCIPLE (RP) DEVICES FOR DOMESTIC AND IRRIGATION SERVICES, AND REDUCED PRINCIPAL DETECTOR CHECK ASSEMBLY (RPDA) FOR DEDICATED FIRE SERVICES. RP/RPDA DEVICES SHALL BE INSTALLED BY CONTRACTOR IN ACCORDANCE WITH FOWD APPLICABLE STANDARDS AND TESTED AND CERTIFIED BY FOWD FOR THE FIRST TIME PRIOR TO OBTAINING WATER SERVICE. MAINTENANCE AND ANNUAL CERTIFICATION OF THE RP/RPDA DEVICE ARE THE PROPERTY OWNER'S RESPONSIBILITY. TYPE OF RP/RPDA DEVICES SHALL BE APPROVED BY FOWD. RP DEVICES SHALL BE INSTALLED WITHIN FIVE (5) FEET FROM THE METER BOX AND RPDA SHALL BE INSTALLED WITHIN 5 FEET FROM EDGE OF RIGHT OF WAY FOR FIRE SERVICE, WITH NO TEES OR CROSS CONNECTIONS BETWEEN THE WATER METER AND A RP/RPDA DEVICE.
19. SANITARY SEWER AND STORM DRAIN PROXIMITY – A MINIMUM OF 10 FT HORIZONTAL AND 1 FT VERTICAL SEPARATION BETWEEN WATER AND SANITARY SEWER FACILITIES, AND A MINIMUM OF 4 FT HORIZONTAL AND 1 FT VERTICAL SEPARATION BETWEEN WATER AND STORM FACILITIES ARE REQUIRED. IF REQUIRED SEPARATION CANNOT BE MAINTAINED, A HIGHER CLASS OF PIPE MATERIAL AND POSSIBLE SLEEVE FOR THE PIPE INSTALLATION WITH FOWD APPROVED INSTALLATION DETAIL IS REQUIRED. ANY WATER MAIN NEEDING TO BE ROUTED UNDER SEWER REQUIRES SWRCB-DDW APPROVAL PRIOR TO INSTALLATION.
20. DRY UTILITIES PROXIMITY – A MINIMUM OF 4 FT HORIZONTAL AND 1 FT VERTICAL SEPARATION BETWEEN WATER AND ALL DRY UTILITIES INCLUDING GAS IS REQUIRED. VARIANCES REQUIRE FOWD APPROVAL.
21. BACKFILLING AND COMPACTION – NATIVE BACKFILL WILL NOT BE ALLOWED IN TRENCHES CONTAINING PUBLIC WATER FACILITIES. TRENCH FOR ALL PUBLIC WATER MAINS/SERVICES LOCATED WITHIN AN EXISTING OR PROPOSED ROW, PUE, OR DEDICATED WATER EASEMENTS, SHALL CONFORM TO FOWD SPECIFICATIONS. FOWD'S STANDARD DRAWING #8, AND ALL SACRAMENTO COUNTY REQUIREMENTS AS THEY APPLY. A MINIMUM OF 36-INCH COVER OVER WATER MAINS AND A MINIMUM OF 24-INCH COVER OVER WATER SERVICES ARE REQUIRED UNLESS OTHERWISE APPROVED BY FOWD. UTILITY SAND BEDDING SHALL BE MINIMUM OF 6" BELOW BASE AND 12" ABOVE PIPE. BEDDING FOUNDATION SHALL PROVIDE UNIFORM SUPPORT OF PIPE, WITH BELL ENDS EXCAVATED PER MANUFACTURER'S RECOMMENDATION. EACH LIFT SHALL BE COMPACTED TO 90%.
22. PAVING RESTORATION – SHALL BE PER SACRAMENTO COUNTY APPLICABLE STANDARD DRAWINGS AND REQUIREMENTS.
23. HYDROSTATIC TESTING – THE CONTRACTOR SHALL PROVIDE A PASSING HYDROSTATIC TEST FOR ALL NEW PIPES AND WATER APPURTENANCES IN ACCORDANCE WITH FOWD STANDARD SPECIFICATIONS OR THE MOST RECENT AWWA STANDARD FOR METHOD AND MATERIALS USED. THE TESTING MUST BE WITNESSED AND APPROVED BY AN AUTHORIZED FOWD REPRESENTATIVE. NOTIFICATION FOR SCHEDULING OF TEST MUST BE PROVIDED A MINIMUM OF TWO WORKING DAYS PRIOR TO TESTING AND MUST BE CONDUCTED MON-THUR.
24. DISINFECTION AND BACTERIOLOGICAL SAMPLING – ALL NEW WATER FACILITIES SHALL BE DISINFECTED IN ACCORDANCE WITH CURRENT AWWA STANDARD AND FOWD STANDARD SPECIFICATIONS. FOWD COLLECTS SAMPLES FOR BACTERIOLOGICAL TESTING AND MUST BE CONTACTED MINIMUM OF TWO WORKING DAYS PRIOR TO NEEDED SAMPLING.
25. MAINS AND SERVICES SHUTDOWN – THE CONTRACTOR SHALL CONTACT FOWD INSPECTOR AND/OR FOWD OFFICE A MINIMUM OF THREE (3) WORKING DAYS PRIOR TO ANY WATER MAIN/SERVICE SHUTDOWN REQUEST. NECESSARY SHUTDOWNS ARE TO BE COMPLETED BY FOWD AUTHORIZED STAFF OR REPRESENTATIVE(S) ONLY. SHUTDOWNS ARE TO BE SCHEDULED TUESDAYS – THURSDAYS.
26. INSPECTION – FOWD INSPECTOR WILL INSPECT INSTALLATION OF ALL PUBLIC WATER FACILITIES. IF AFTER ANY INSTALLATION, OR FINAL INSPECTION, FOWD DETERMINES THAT THE JOB IS NOT COMPLETE OR NOT COMPLETED IN ACCORDANCE WITH THE PROJECT DOCUMENTS OR FOWD STANDARDS, THE CONTRACTOR WILL HAVE 15 WORKING DAYS TO COMPLETE THE WORK TO FOWD'S SATISFACTION. THE CONTRACTOR MAY BE CHARGED FOR RE-INSPECTION. WATER SYSTEM WILL NOT BE ACTIVATED UNTIL ALL DEFICIENCIES HAVE BEEN CORRECTED AND THE SYSTEM IS ACCEPTED BY FOWD.
27. WARRANTY – CONTRACTOR SHALL PROVIDE MAINTENANCE BOND AND GUARANTEE ALL WORK FOR A PERIOD OF ONE (1) YEAR FROM THE DATE THE NEW WATER FACILITIES ACCEPTED BY FOWD AGAINST DAMAGES OR FAILURES FROM ANY CAUSE.
28. SALVAGE AND DISPOSAL – CONTRACTOR IS RESPONSIBLE FOR REMOVAL AND DISPOSAL OF ALL SALVAGE PIPE, AS WELL AS ANY FITTINGS OR OTHER RELATED MATERIALS GENERATED FROM INSTALLATION AND TIE-IN TO FOWD WATERLINES AND COSTS ASSOCIATED. DISTURBANCE OF ASBESTOS CEMENT PIPES (ACP) IS REGULATED UNDER CAL/OSHA, TITLE 8, SECTION 1529 AND CONTRACTOR SHALL COMPLY WITH ALL THEREIN. CONTRACTOR MUST SUBMIT TO FOWD A CERTIFICATE OF DISPOSAL TO VERIFY ANY ACP WASTE WAS PROPERLY DISPOSED OF. ANY PORTION OF ACP TO BE ABANDONED IN PLACE MUST BE LEFT INTACT AND NON-FRIABLE.

LEGEND:

- (W) (E) WATER VALVE
- (E) WATER METER / VAULT
- (E) WATER AIR RELEASE VALVE
- (E) BACKFLOW
- (E) FIRE HYDRANT
- (E) SEWER MANHOLE
- (E) SEWER CLEANOUT
- (E) STORM DRAIN MANHOLE
- (E) DRAIN INLET
- (E) STREET LIGHT
- (E) UNKNOWN MANHOLE
- (E) UNKNOWN UTILITY
- (E) TELEPHONE BOX / VAULT
- (E) TELEPHONE METER
- (E) ELECTRIC TRANSFORMER
- (E) JOINT POLE
- (E) GUY ANCHOR
- (E) BOLLARD / POST
- (E) TREE
- (E) TRAFFIC SIGNAL BOX
- (E) STREET LIGHT BOX
- (E) SMUD BOX / VAULT
- (E) SERVICE BOX
- (E) SUREWEST BOX
- (E) CABLE BOX / PEDESTAL
- (E) TRAFFIC SIGNAL POLE
- (E) SIGN
- (E) MAILBOX
- (E) FENCE LINE
- (E) UNDERGROUND WATER LINE
- (E) UNDERGROUND SEWER LINE
- (E) UNDERGROUND STORM LINE
- (E) UNDERGROUND CABLE LINE
- (E) UNDERGROUND GAS LINE
- (E) OVERHEAD COMCAST
- (E) OVERHEAD ATT
- (E) CENTER LINE


LEGEND CONTINUED:

- (P) WATER MAIN
 - (P) WATER GATE VALVE
 - (P) AIR RELEASE VALVE
 - (P) PROPOSED WATER METER
 - (P) FIRE HYDRANT ASSEMBLY
 - (P) BLOW OFF
 - (P) REDUCER
 - (P) TEMPORARY CONSTRUCTION BLOW OFF
- 
DETAIL #
SHEET #

LIST OF ABBREVIATIONS:

- ARV AIR RELEASE VALVE
- ATT AMERICAN TELEPHONE AND TELEGRAPH
- AVE AVENUE
- CBL CABLE
- CC COMCAST
- DIP DUCTILE IRON PIPE
- DWG DRAWING
- (E) EXISTING
- EL ELBOW
- EP EDGE OF PAVEMENT
- EX. EXISTING
- FE FLANGED END
- F.H. FIRE HYDRANT
- FOB FAIR OAKS BOULEVARD
- G GAS
- GV GATE VALVE
- HORIZ HORIZONTAL
- I.E. INVERT ELEVATION
- MJ MECHANICAL JOINT
- NYA NEW YORK AVENUE
- (P) PROPOSED
- POC POINT OF CONNECTION
- SD STORM DRAIN
- SPEC. SPECIFICATIONS
- SS SANITARY SEWER
- STA STATION
- STD STANDARD DRAWING
- VCP VITRIFIED CLAY PIPE
- VERT VERTICAL
- WTR WATER MAIN
- W.S. WATER SERVICE

ISSUED FOR BID

 <p>FAIR OAKS WATER DISTRICT 10326 FAIR OAKS BLVD., FAIR OAKS, CA 95628 (916) 967-5723</p>	DESIGNED BY: DL				<p>NEW YORK AVENUE PHASE II - 12" WATER MAIN REPLACEMENT PROJECT</p> <p>GENERAL NOTES AND ABBREVIATIONS</p>	<p>SCALE</p> <p>HOR: NONE</p> <p>VERT: NONE</p>	SHEET NUMBER	2
	DRAFTED BY: DL						OF 7 SHEETS	
	CHECKED BY: BC						PROJECT NUMBER	C26TDNYASw2
	DATE: 04/16/2026	REV.	DATE	DESCRIPTION				

NOTE: DUCTILE IRON PIPE GASKETS SHALL BE FIELD LOK 350, OR APPROVED EQUAL, PER AWWA C111

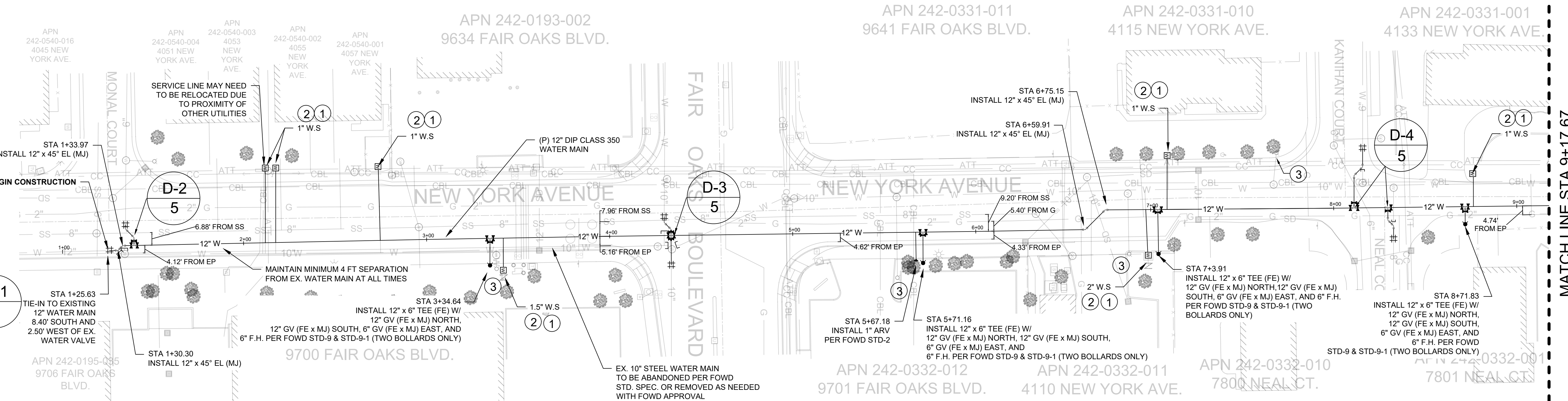
CONSTRUCTION NOTE:
THE TYPES, LOCATIONS, SIZES AND/OR DEPTHS OF EXISTING (E) UTILITIES WERE OBTAINED FROM OUTSIDE AGENCY AS-BUILTS AND MAY VARY IN RELIABILITY. THE CONTRACTOR SHALL POTHOLE AT ALL UTILITY CROSSINGS TO DETERMINE THE ACTUAL LOCATIONS AND DEPTHS OF (E) UTILITIES. PRIOR TO COMMENCING CONSTRUCTION ACTIVITIES, CONTRACTOR SHALL NOTIFY FAIR OAKS WATER DISTRICT ENGINEER TO DETERMINE ANY POSSIBLE CONFLICTS WITH INSTALLATION OF WATER MAIN AND APPURTENANCES. (TYP)

STORM DRAIN NOTE:
DRAINAGE INFORMATION AS SHOWN ON THIS PLAN ARE FROM SACRAMENTO COUNTY DEPARTMENT OF WATER RESOURCES, DRAINAGE FACILITY MAP #354-206 & 356-206.

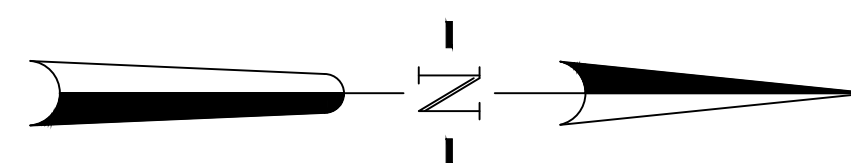
PER SACRAMENTO COUNTY WATER RESOURCES: MAINTAIN 18" (INCHES) OF VERTICAL SEPARATION BETWEEN (E) STORM DRAIN AND (P) WATER MAIN AT ALL CROSSINGS (TYP). MECHANICAL INVERTS FOR WATER MAINS SHALL BE INSTALLED PER FOWD STD-11 WITH MIN. 18" OF VERTICAL SEPARATION.

SANITARY SEWER NOTE:
MAINTAIN 12" MINIMUM VERTICAL SEPARATION AT SANITARY SEWER CROSSINGS PER FOWD STANDARD SPEC. A MINIMUM OF TEN (10') FEET OF HORIZONTAL (WALL-TO-WALL) CLEARANCE SHALL BE MAINTAINED BETWEEN PARALLEL SANITARY SEWER AND WATER DISTRIBUTION MAINS PER FOWD STANDARD SPEC. UNLESS OTHERWISE APPROVED.
WATER CROSSINGS WITH SEWER MAINS LATERALS MUST BE DONE AS CLOSE TO PERPENDICULAR AS PRACTICABLE. CROSSING WITH AN ANGLE LESS THAN 45° SHALL NOT BE CONSTRUCTED.

WATER FACILITIES INSTALLATION NOTE:
PROPOSED (P) WATER FACILITIES CROSSING WITH EXISTING UTILITIES AT MULTIPLE LOCATIONS WITHIN THE PROJECT LIMITS WHICH MAY REQUIRE (P) WATER FACILITIES TO BE INSTALLED DEEPER THAN REGULAR DEPTH OF 36" FROM FINISH GRADE. CONTRACTOR TO POTHOLE (AT CONTRACTOR EXPENSE) EVERY CROSSING PRIOR TO START OF TRENCHING.



MATCH LINE STA 9+17.67
SEE SHEET 4

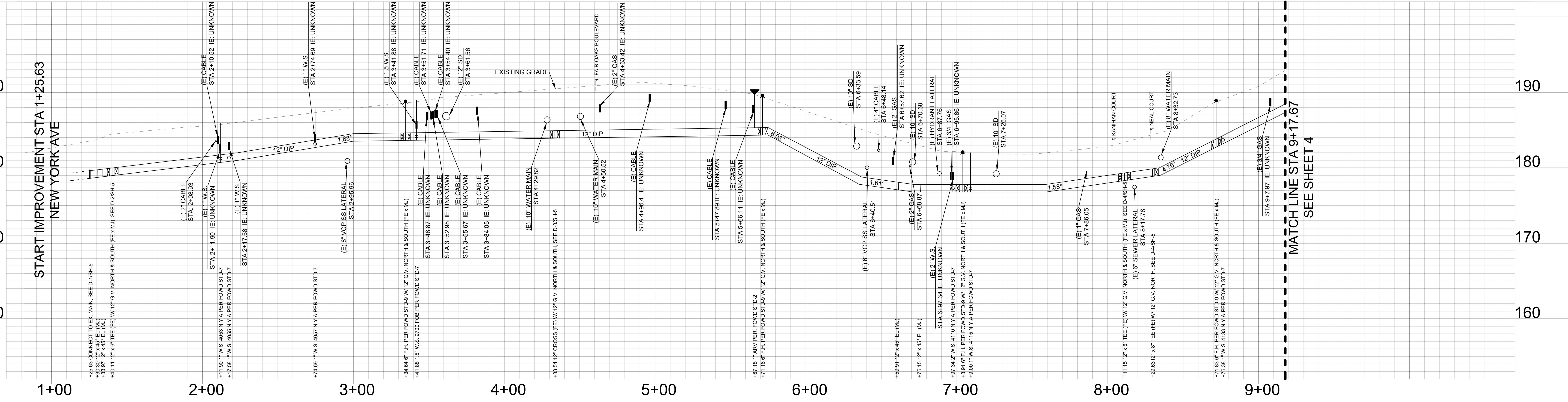


INSTALLATION NOTES:

- ① ABANDON EX. W.S. PER FOWD STANDARD SPECIFICATIONS.
- ② INSTALL NEW WATER SERVICE LINE FROM PROPOSED (P) WATER MAIN AND CONNECT TO EXISTING (EX.) METER SETTER PER FOWD STD-7. REPLACE EX. METER BOX WITH A CONCRETE BOX AND STEEL LID MARKED "WATER" WITH A 2" CORE HOLE FOR ANTENNA. SERVICE CONNECTION SHALL BE MADE WITH MINIMAL SERVICE DISRUPTION.
- ③ ABANDON EX. HYDRANT & BOLLARDS PER FOWD STANDARD SPECIFICATIONS AND DELIVER EXISTING HYDRANT HEAD TO THE FOWD.
- 4 CONTRACTOR TO ABANDON EX. VALVES AND APPURTENANCES PER FOWD STANDARD SPECIFICATIONS AND SACRAMENTO COUNTY STANDARDS (TYP).
- 5 ALL WATER SERVICES RUN OVER AT CROSSING WITH SS MAIN.
- 6 ALL DIMENSIONS PROVIDED ON THIS PLAN ARE IN FEET UNLESS OTHERWISE NOTED. PIPE DIAMETERS ARE IN INCHES.

ISSUED FOR BID

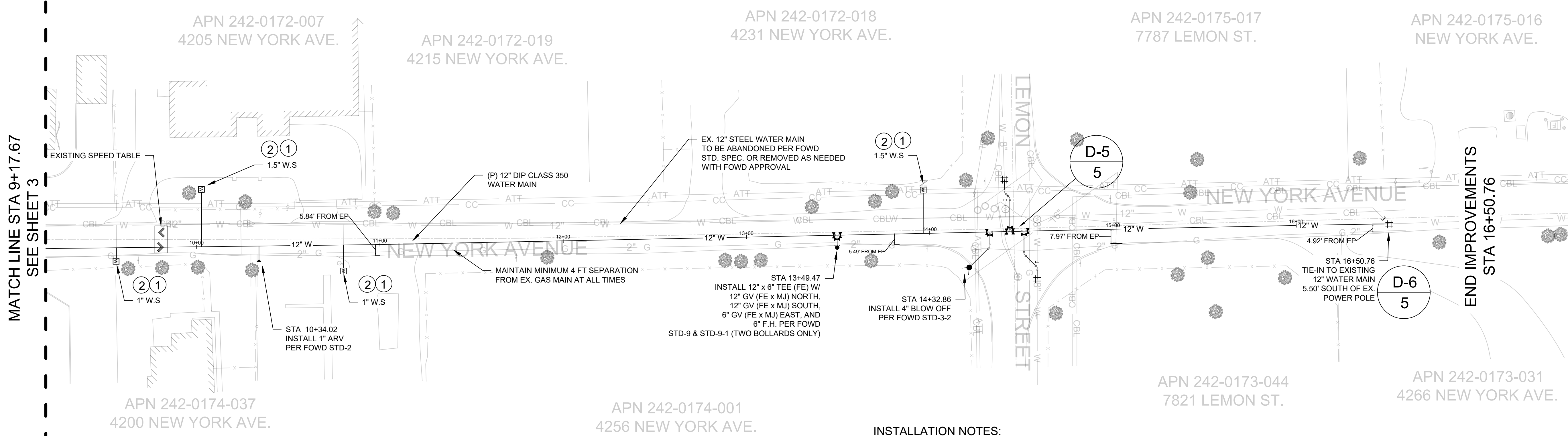
NEW YORK AVENUE STATION 1+25.63 TO 9+17.67



MATCH LINE STA 9+17.67
SEE SHEET 4

	FAIR OAKS WATER DISTRICT 10326 FAIR OAKS BLVD., FAIR OAKS, CA 95628 (916) 967-5723	DESIGNED BY: DL			NEW YORK AVENUE PHASE II - 12" WATER MAIN REPLACEMENT PROJECT PLAN-PROFILE STA. 1+25.63 TO STA. 9+17.67	SCALE 	SHEET NUMBER 3 OF 7 SHEETS PROJECT NUMBER C26TDNYASW2
	DRAFTED BY: DL CHECKED BY: BC DATE: 04/16/2026	REV.	DATE	DESCRIPTION			

NOTE: DUCTILE IRON PIPE GASKETS SHALL BE FIELD LOK 350, OR APPROVED EQUAL, PER AWWA C111



CONSTRUCTION NOTE:
THE TYPES, LOCATIONS, SIZES AND/OR DEPTHS OF EXISTING (E) UTILITIES WERE OBTAINED FROM OUTSIDE AGENCY AS-BUILTS AND MAY VARY IN RELIABILITY. THE CONTRACTOR SHALL POHOLE AT ALL UTILITY CROSSINGS TO DETERMINE THE ACTUAL LOCATIONS AND DEPTHS OF (E) UTILITIES. PRIOR TO COMMENCING CONSTRUCTION ACTIVITIES, CONTRACTOR SHALL NOTIFY FAIR OAKS WATER DISTRICT ENGINEER TO DETERMINE ANY POSSIBLE CONFLICTS WITH INSTALLATION OF WATER MAIN AND APPURTENANCES. (TYP)

STORM DRAIN NOTE:
DRAINAGE INFORMATION AS SHOWN ON THIS PLAN ARE FROM SACRAMENTO COUNTY DEPARTMENT OF WATER RESOURCES, DRAINAGE FACILITY MAP #354-206 & 356-206.

PER SACRAMENTO COUNTY WATER RESOURCES: MAINTAIN 18" (INCHES) OF VERTICAL SEPARATION BETWEEN (E) STORM DRAIN AND (P) WATER MAIN AT ALL CROSSINGS (TYP). MECHANICAL INVERTS FOR WATER MAINS SHALL BE INSTALLED PER FOWD STD-11 WITH MIN. 18" OF VERTICAL SEPARATION.

SANITARY SEWER NOTE:
MAINTAIN 12" MINIMUM VERTICAL SEPARATION AT SANITARY SEWER CROSSINGS PER FOWD STANDARD SPEC. A MINIMUM OF TEN (10') FEET OF HORIZONTAL (WALL-TO-WALL) CLEARANCE SHALL BE MAINTAINED BETWEEN PARALLEL SANITARY SEWER AND WATER DISTRIBUTION MAINS PER FOWD STANDARD SPEC. UNLESS OTHERWISE APPROVED. WATER CROSSINGS WITH SEWER MAINS LATERALS MUST BE DONE AS CLOSE TO PERPENDICULAR AS PRACTICABLE. CROSSING WITH AN ANGLE LESS THAN 45° SHALL NOT BE CONSTRUCTED.

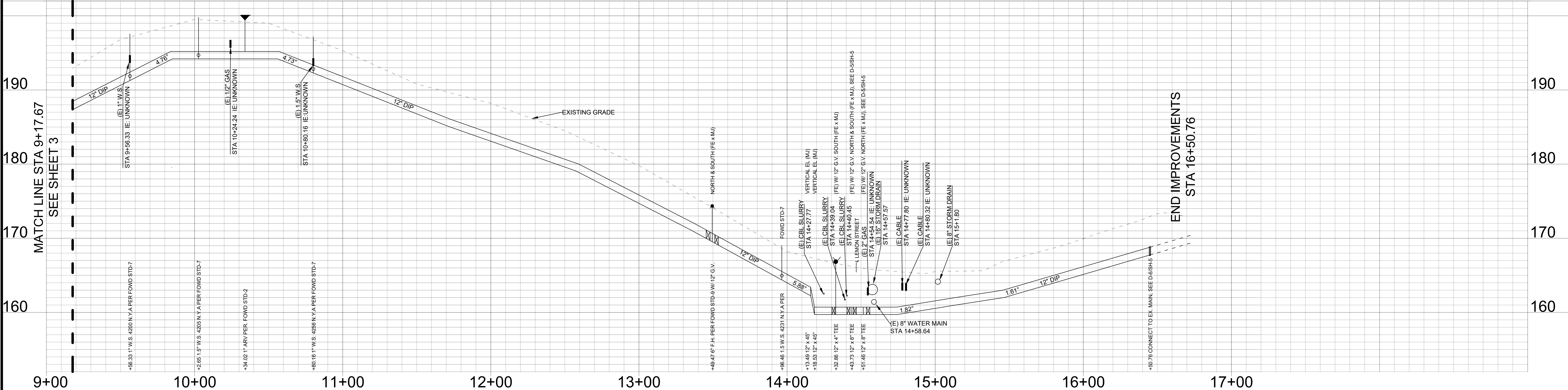
WATER FACILITIES INSTALLATION NOTE:
PROPOSED (P) WATER FACILITIES CROSSING WITH EXISTING UTILITIES AT MULTIPLE LOCATIONS WITHIN THE PROJECT LIMITS WHICH MAY REQUIRE (P) WATER FACILITIES TO BE INSTALLED DEEPER THAN REGULAR DEPTH OF 36" FROM FINISH GRADE. CONTRACTOR TO POHOLE (AT CONTRACTOR EXPENSE) EVERY CROSSING PRIOR TO START OF TRENCHING.

INSTALLATION NOTES:

- ① ABANDON EX. W.S. PER FOWD STANDARD SPECIFICATIONS.
- ② INSTALL NEW WATER SERVICE LINE FROM PROPOSED (P) WATER MAIN AND CONNECT TO EXISTING (EX.) METER SETTER PER FOWD STD-7. REPLACE EX. METER BOX WITH A CONCRETE BOX AND STEEL LID MARKED "WATER" WITH A 2" CORE HOLE FOR ANTENNA. SERVICE CONNECTION SHALL BE MADE WITH MINIMAL SERVICE DISRUPTION.
- ③ ABANDON EX. HYDRANT & BOLLARDS PER FOWD STANDARD SPECIFICATIONS AND DELIVER EXISTING HYDRANT HEAD TO THE FOWD.
- ④ CONTRACTOR TO ABANDON EX. VALVES AND APPURTENANCES PER FOWD STANDARD SPECIFICATIONS AND SACRAMENTO COUNTY STANDARDS (TYP).
- ⑤ ALL WATER SERVICES RUN OVER AT CROSSING WITH SS MAIN.
- ⑥ ALL DIMENSIONS PROVIDED ON THIS PLAN ARE IN FEET UNLESS OTHERWISE NOTED. PIPE DIAMETERS ARE IN INCHES.

ISSUED FOR BID

NEW YORK AVENUE STATION 9+17.67 TO 16+50.76



FAIR OAKS WATER DISTRICT
10326 FAIR OAKS BLVD.,
FAIR OAKS, CA 95628
(916) 967-5723

DESIGNED BY: DL			
DRAFTED BY: DL			
CHECKED BY: BC			
DATE: 04/16/2026	REV.	DATE	DESCRIPTION

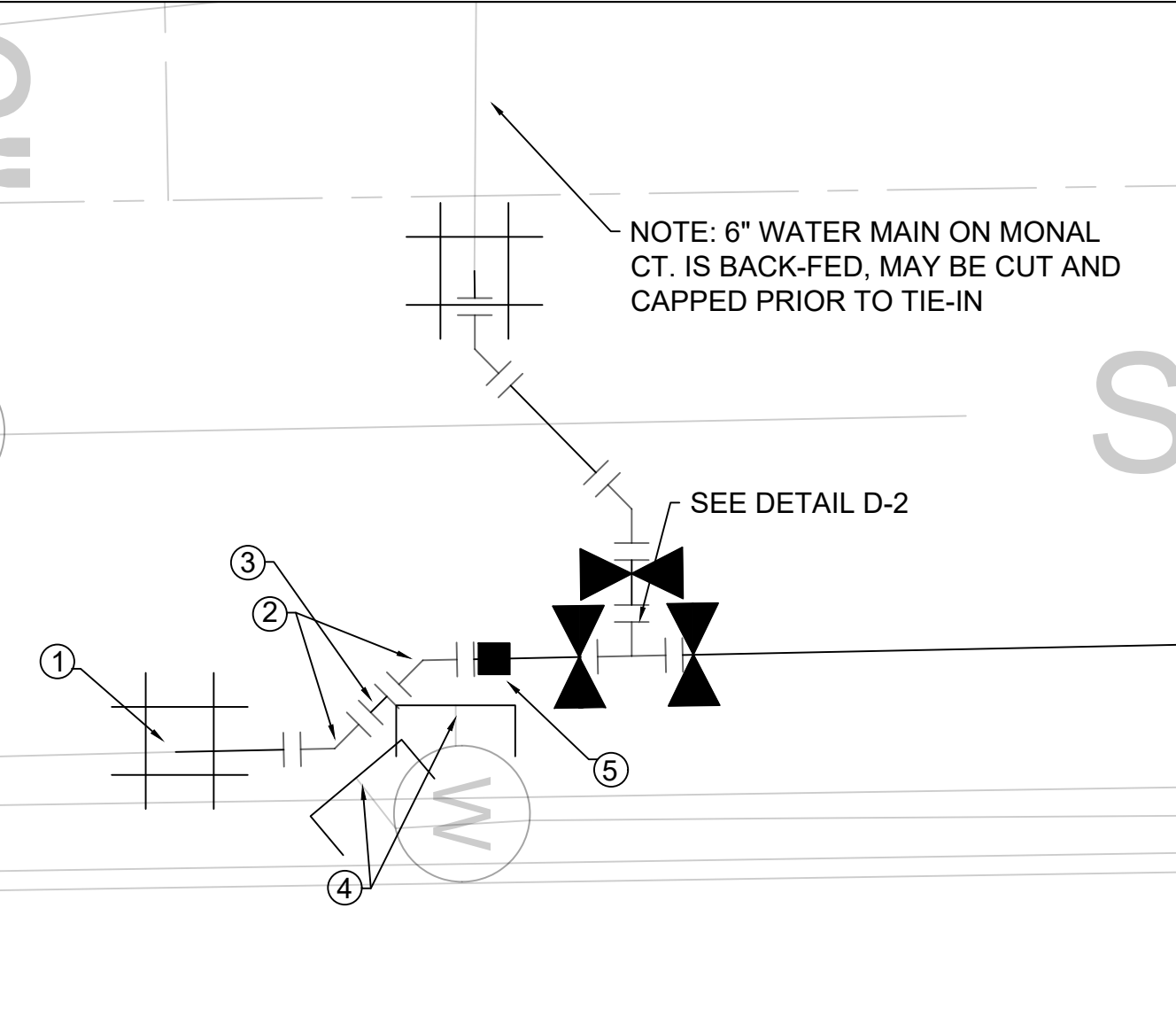
NEW YORK AVENUE PHASE II - 12" WATER MAIN REPLACEMENT PROJECT
PLAN-PROFILE STA. 9+17.67 TO STA. 16+50.76

SCALE
1 INCH = 30' HORIZ
1 INCH = 6' VERT

SHEET NUMBER **4**
OF **7** SHEETS
PROJECT NUMBER
C26TDNYASW2

- NOTES:**
- DUCTILE IRON PIPE GASKETS SHALL BE FIELD LOK 350, OR APPROVED EQUAL, PER AWWA C111
 - CONTRACTOR IS RESPONSIBLE FOR PRESERVING THE EXISTING WATER MAIN AND APPURTENANCES DURING POINT OF CONNECTION TIE-INS. THE CONTRACTOR WILL ASSUME FULL LIABILITY FOR ANY DAMAGE CAUSED TO FOWD'S DISTRIBUTION SYSTEM FACILITIES AS A RESULT OF CONSTRUCTION ACTIVITY.

CONNECTION DETAIL OF (P) 12" DIP ON N.Y.A TO EX. MAIN

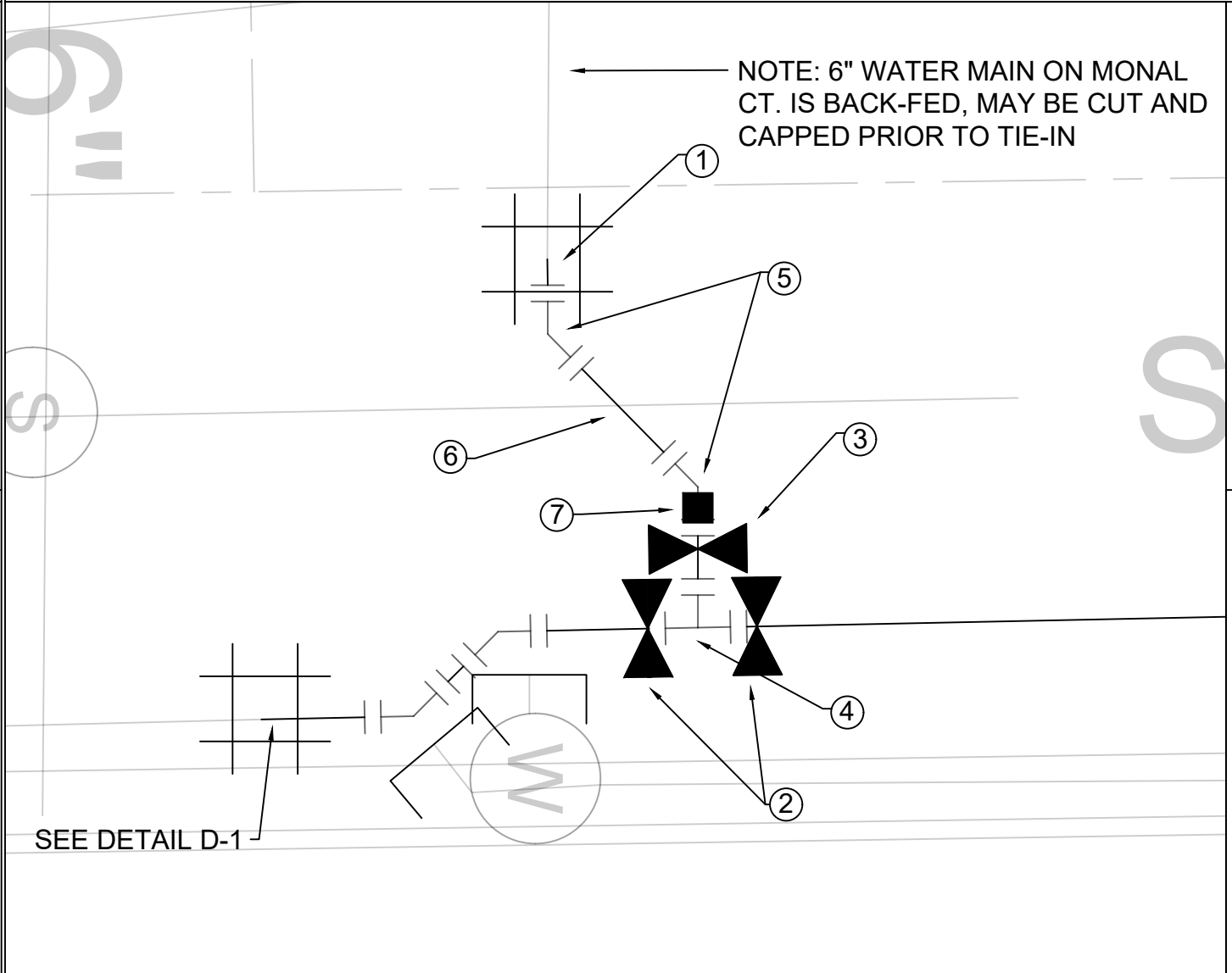


- CONNECTION NOTES STA 1+25.63:**
- 1 - 12" TRANSITION COUPLING (DIP x C900)
 - 2 - 45" EL (MJ)
 - 1 - 12" DIP SPOOL (FE)
 - 1 - 10" CAP & 6" CAP
 - 1 - 2" TEMPORARY CONSTRUCTION BOV PER FOWD STD-3-3

- POC NOTES:**
- DUE TO POSSIBLE CONFLICT WITH EXISTING (EX.) UTILITIES, (P) WATER FACILITIES MAY NEED TO BE INSTALLED DEEPER OR INVERT MAY NEED TO BE INSTALLED PER FOWD STD-11.
 - CONTRACTOR TO PROVIDE TEMPORARY CONSTRUCTION BLOW OFF VALVES (BOV) ON (P) MAIN AS SHOWN AND REMOVE IT PRIOR TO TIE-IN WITH EX. MAINS PER FOWD STD-3-3.
 - CONTRACTOR TO REMOVE AND DISPOSE (AT CONTRACTOR EXPENSE) A PORTION OF EX. WATER MAIN AS SHOWN AND REPLACE IT (IN PLACE) WITH 12" DIP.
 - CONTRACTOR TO ABANDON EX. WATER FACILITIES AS PER THE FOWD STD. SPEC.
 - ADDITIONAL FITTINGS MAY BE NEEDED FOR TIE-IN TO EX. MAINS AND AT (P) MAIN CROSSING WITH EX. UTILITIES.

STA. 1+25.63 TIE-IN DETAIL D-1
NTS 3

CONNECTION DETAIL OF (P) 12" DIP ON N.Y.A TO EX. MAIN ON MONAL COURT

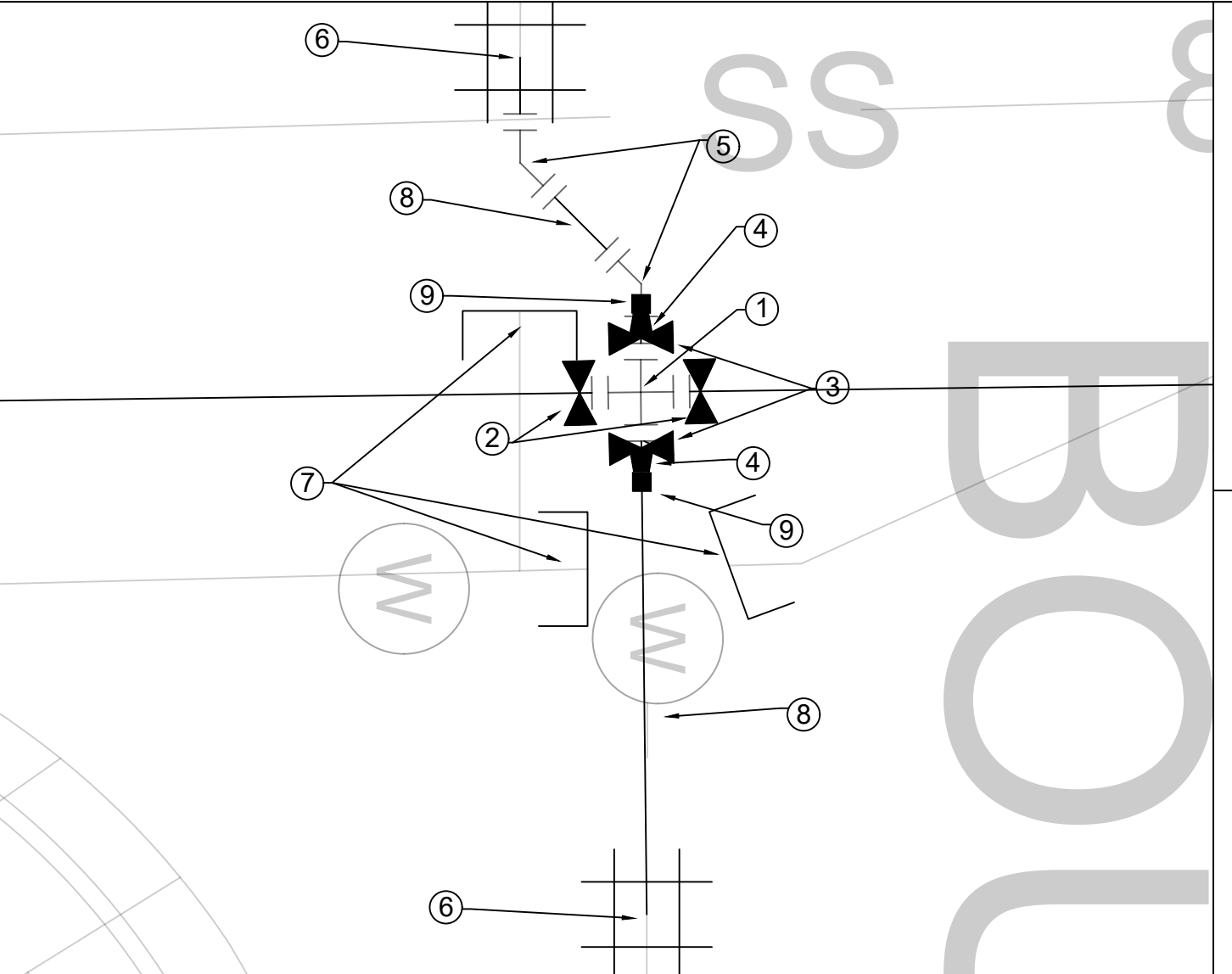


- CONNECTION NOTES STA 1+40.11:**
- 1 - 6" TRANSITION COUPLING (DIP x AC)
 - 2 - 12" GATE VALVE (FE x MJ)
 - 1 - 6" GATE VALVE (FE x MJ)
 - 1 - 12" x 6" TEE (FE)
 - 2 - 45" EL (MJ)
 - 12 ± LF - 6" DIP, CLASS 350
 - 1 - 2" TEMPORARY CONSTRUCTION BOV PER FOWD STD-3-3

- POC NOTES:**
- DUE TO POSSIBLE CONFLICT WITH EXISTING (EX.) UTILITIES, (P) WATER FACILITIES MAY NEED TO BE INSTALLED DEEPER OR INVERT MAY NEED TO BE INSTALLED PER FOWD STD-11.
 - CONTRACTOR TO PROVIDE TEMPORARY CONSTRUCTION BLOW OFF VALVES (BOV) ON (P) MAIN AS SHOWN AND REMOVE IT PRIOR TO TIE-IN WITH EX. MAINS PER FOWD STD-3-3.
 - CONTRACTOR TO REMOVE AND DISPOSE (AT CONTRACTOR EXPENSE) A PORTION OF EX. WATER MAIN AS SHOWN AND REPLACE IT (IN PLACE) WITH 12" DIP.
 - CONTRACTOR TO ABANDON EX. WATER FACILITIES AS PER THE FOWD STD. SPEC.
 - ADDITIONAL FITTINGS MAY BE NEEDED FOR TIE-IN TO EX. MAINS AND AT (P) MAIN CROSSING WITH EX. UTILITIES.

STA. 1+40.11 TIE-IN DETAIL D-2
NTS 3

CONNECTION DETAIL OF (P) 12" DIP ON N.Y.A TO EX. MAIN ON FAIR OAKS BOULEVARD



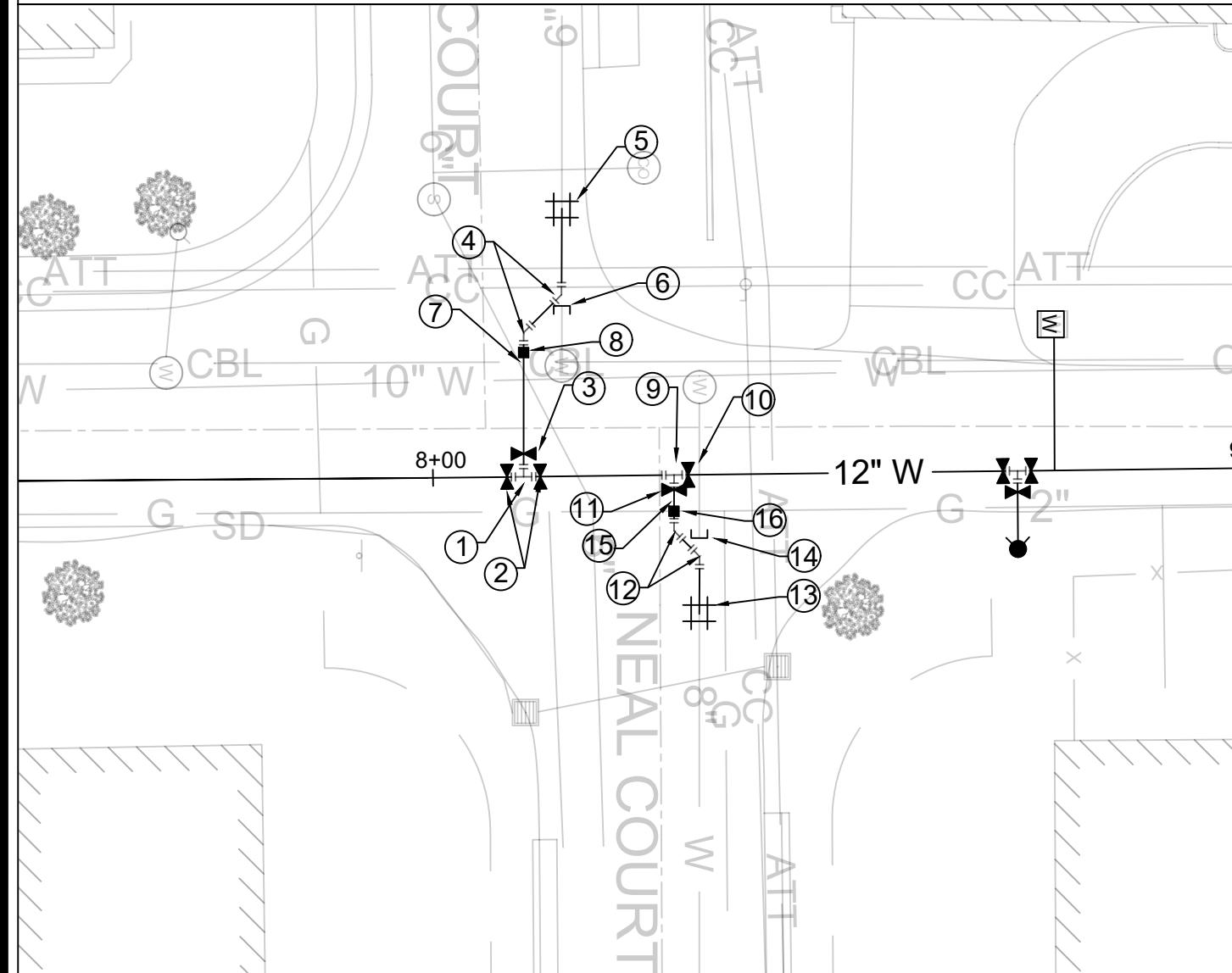
- CONNECTION NOTES STA 4+33.54:**
- 1 - 12" CROSS (FE)
 - 2 - 12" GATE VALVE (FE x MJ)
 - 2 - 12" GATE VALVE (FE)
 - 2 - 12" x 10" REDUCER (FE x MJ)
 - 2 - 10" x 45" EL (MJ)
 - 2 - 10" TRANSITION COUPLING (DIP x AC)
 - 3 - 10" CAP
 - 26 ± LF - 10" DIP, CLASS 350
 - 2 - 2" TEMPORARY CONSTRUCTION BOV PER FOWD STD-3-3

- POC NOTES:**
- DUE TO POSSIBLE CONFLICT WITH EXISTING (EX.) UTILITIES, (P) WATER FACILITIES MAY NEED TO BE INSTALLED DEEPER OR INVERT MAY NEED TO BE INSTALLED PER FOWD STD-11.
 - CONTRACTOR TO PROVIDE TEMPORARY CONSTRUCTION BLOW OFF VALVES (BOV) ON (P) MAIN AS SHOWN AND REMOVE IT PRIOR TO TIE-IN WITH EX. MAINS PER FOWD STD-3-3.
 - CONTRACTOR TO REMOVE AND DISPOSE (AT CONTRACTOR EXPENSE) A PORTION OF EX. WATER MAIN AS SHOWN AND REPLACE IT (IN PLACE) WITH 12" DIP.
 - CONTRACTOR TO ABANDON EX. WATER FACILITIES AS PER THE FOWD STD. SPEC.
 - ADDITIONAL FITTINGS MAY BE NEEDED FOR TIE-IN TO EX. MAINS AND AT (P) MAIN CROSSING WITH EX. UTILITIES.

STA. 4+33.54 TIE-IN DETAIL D-3
NTS 3

- NOTES:**
- DUCTILE IRON PIPE GASKETS SHALL BE FIELD LOK 350, OR APPROVED EQUAL, PER AWWA C111
 - CONTRACTOR IS RESPONSIBLE FOR PRESERVING THE EXISTING WATER MAIN AND APPURTENANCES DURING POINT OF CONNECTION TIE-INS. THE CONTRACTOR WILL ASSUME FULL LIABILITY FOR ANY DAMAGE CAUSED TO FOWD'S DISTRIBUTION SYSTEM FACILITIES AS A RESULT OF CONSTRUCTION ACTIVITY.

CONNECTION DETAIL OF (P) 12" DIP ON N.Y.A TO EX. MAIN ON NEAL COURT & KANIHAN COURT

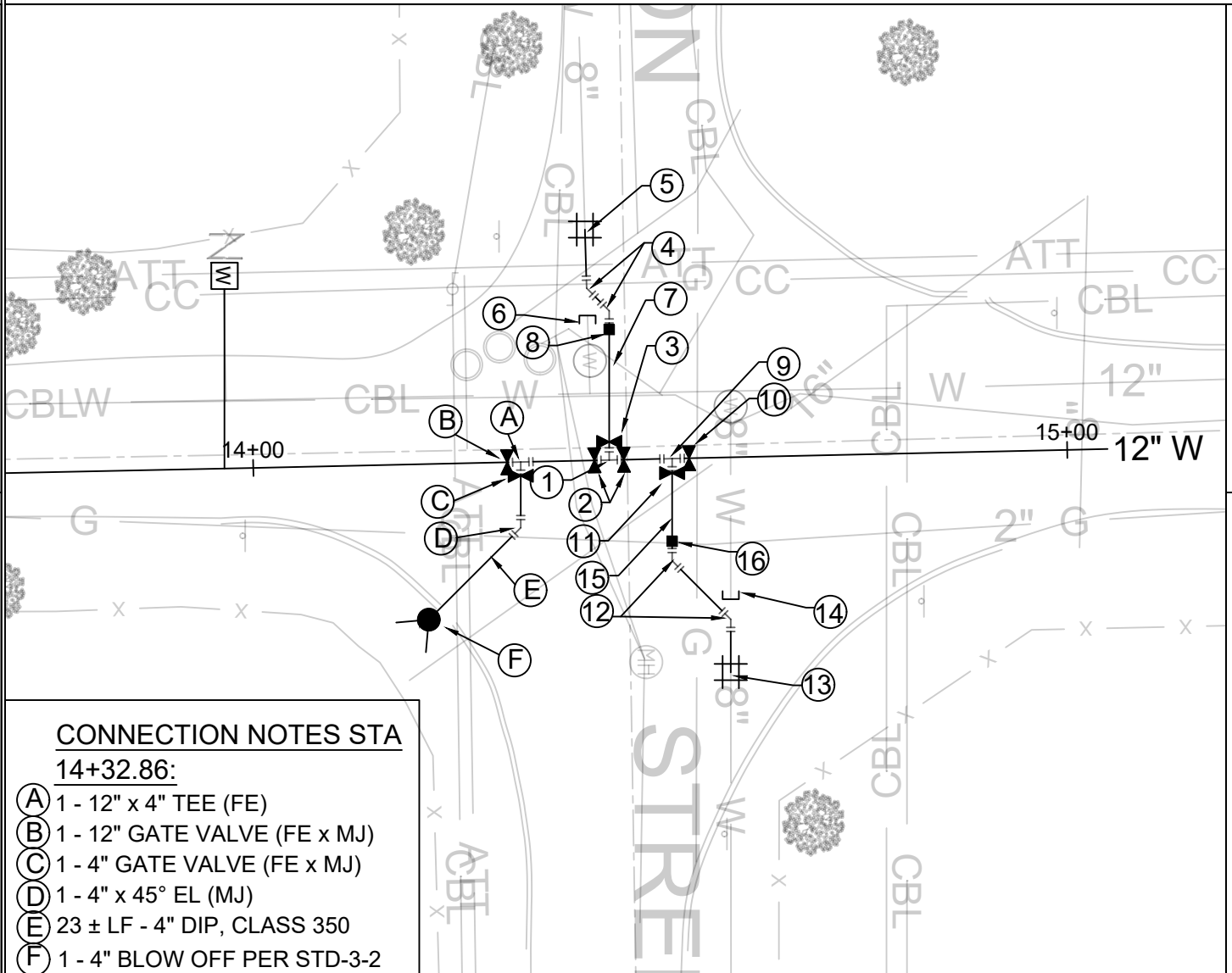


- CONNECTION NOTES STA 8+11.15:**
- 1 - 12" x 6" TEE (FE)
 - 2 - 12" GATE VALVE (FE x MJ)
 - 1 - 6" GATE VALVE (FE x MJ)
 - 2 - 6" x 45" EL (MJ)
 - 1 - 6" TRANSITION COUPLING (DIP x AC)
 - 1 - 6" CAP
 - 34 ± LF - 6" DIP, CLASS 350
 - 1 - 2" TEMPORARY CONSTRUCTION BOV PER FOWD STD-3-3

- CONNECTION NOTE STA 8+29.63:**
- 1 - 12" x 8" TEE (FE)
 - 1 - 12" GATE VALVE (FE x MJ)
 - 1 - 8" GATE VALVE (FE x MJ)
 - 2 - 8" x 45" EL (MJ)
 - 1 - 8" TRANSITION COUPLING (DIP x C900)
 - 1 - 8" CAP
 - 20 ± LF - 8" DIP, CLASS 350
 - 1 - 2" TEMPORARY CONSTRUCTION BOV PER FOWD STD-3-3

STA. 8+11.15 & 8+29.63 TIE-IN DETAIL D-4
NTS 3

CONNECTION DETAIL OF (P) 12" DIP ON N.Y.A TO EX. MAIN ON LEMON STREET



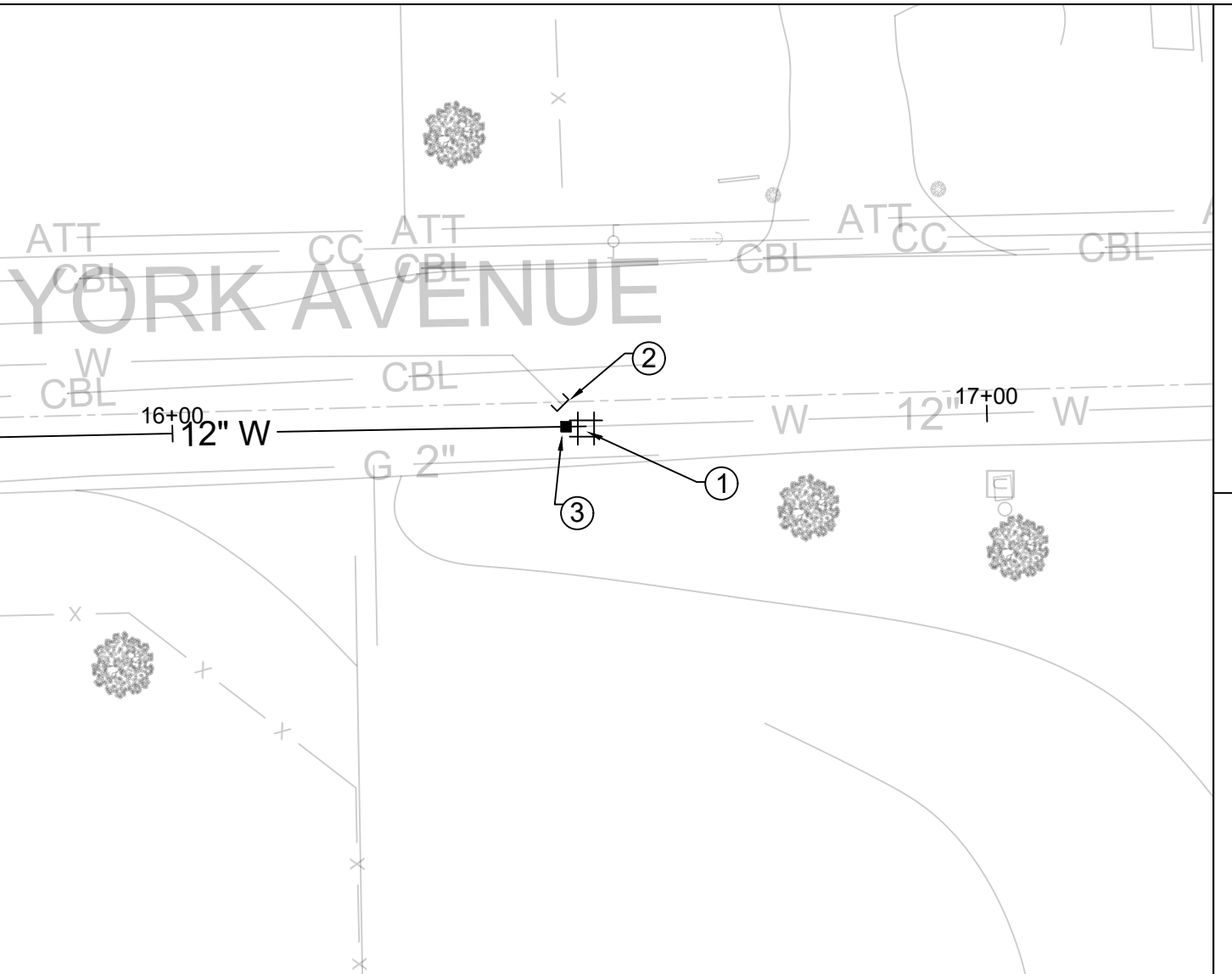
- CONNECTION NOTES STA 14+43.73:**
- 1 - 12" x 8" TEE (FE)
 - 2 - 12" GATE VALVE (FE x MJ)
 - 1 - 8" GATE VALVE (FE x MJ)
 - 2 - 8" x 45" EL (MJ)
 - 1 - 8" TRANSITION COUPLING (DIP x AC)
 - 1 - 8" CAP
 - 30 ± LF - 8" DIP, CLASS 350
 - 1 - 2" TEMPORARY CONSTRUCTION BOV PER FOWD STD-3-3

- CONNECTION NOTES STA 14+51.46:**
- 1 - 12" x 8" TEE (FE)
 - 1 - 12" GATE VALVE (FE x MJ)
 - 1 - 8" GATE VALVE (FE x MJ)
 - 2 - 8" x 45" EL (MJ)
 - 1 - 8" TRANSITION COUPLING (DIP x AC)
 - 1 - 8" CAP
 - 30 ± LF - 8" DIP, CLASS 350
 - 1 - 2" TEMPORARY CONSTRUCTION BOV PER FOWD STD-3-3

- CONNECTION NOTES STA 14+32.86:**
- 1 - 12" x 4" TEE (FE)
 - 1 - 12" GATE VALVE (FE x MJ)
 - 1 - 4" GATE VALVE (FE x MJ)
 - 1 - 4" x 45" EL (MJ)
 - 23 ± LF - 4" DIP, CLASS 350
 - 1 - 4" BLOW OFF PER STD-3-2

STA. 14+32.86 & 14+43.73 & 14+51.46 TIE-IN DETAIL D-5
NTS 4

CONNECTION DETAIL OF (P) 12" DIP ON N.Y.A TO EX. MAIN



- CONNECTION NOTES STA 16+50.76:**
- 1 - 12" TRANSITION SLEEVE (MJ)
 - 1 - 12" CAP
 - 1 - 2" TEMPORARY CONSTRUCTION BOV PER FOWD STD-3-3

- POC NOTES:**
- DUE TO POSSIBLE CONFLICT WITH EXISTING (EX.) UTILITIES, (P) WATER FACILITIES MAY NEED TO BE INSTALLED DEEPER OR INVERT MAY NEED TO BE INSTALLED PER FOWD STD-11.
 - CONTRACTOR TO PROVIDE TEMPORARY CONSTRUCTION BLOW OFF VALVES (BOV) ON (P) MAIN AS SHOWN AND REMOVE IT PRIOR TO TIE-IN WITH EX. MAINS PER FOWD STD-3-3.
 - CONTRACTOR TO REMOVE AND DISPOSE (AT CONTRACTOR EXPENSE) A PORTION OF EX. WATER MAIN AS SHOWN AND REPLACE IT (IN PLACE) WITH 12" DIP.
 - CONTRACTOR TO ABANDON EX. WATER FACILITIES AS PER THE FOWD STD. SPEC.
 - ADDITIONAL FITTINGS MAY BE NEEDED FOR TIE-IN TO EX. MAINS AND AT (P) MAIN CROSSING WITH EX. UTILITIES.

STA. 16+50.76 TIE-IN DETAIL D-6
NTS 4

ISSUED FOR BID

FAIR OAKS WATER DISTRICT
10326 FAIR OAKS BLVD.,
FAIR OAKS, CA 95628
(916) 967-5723

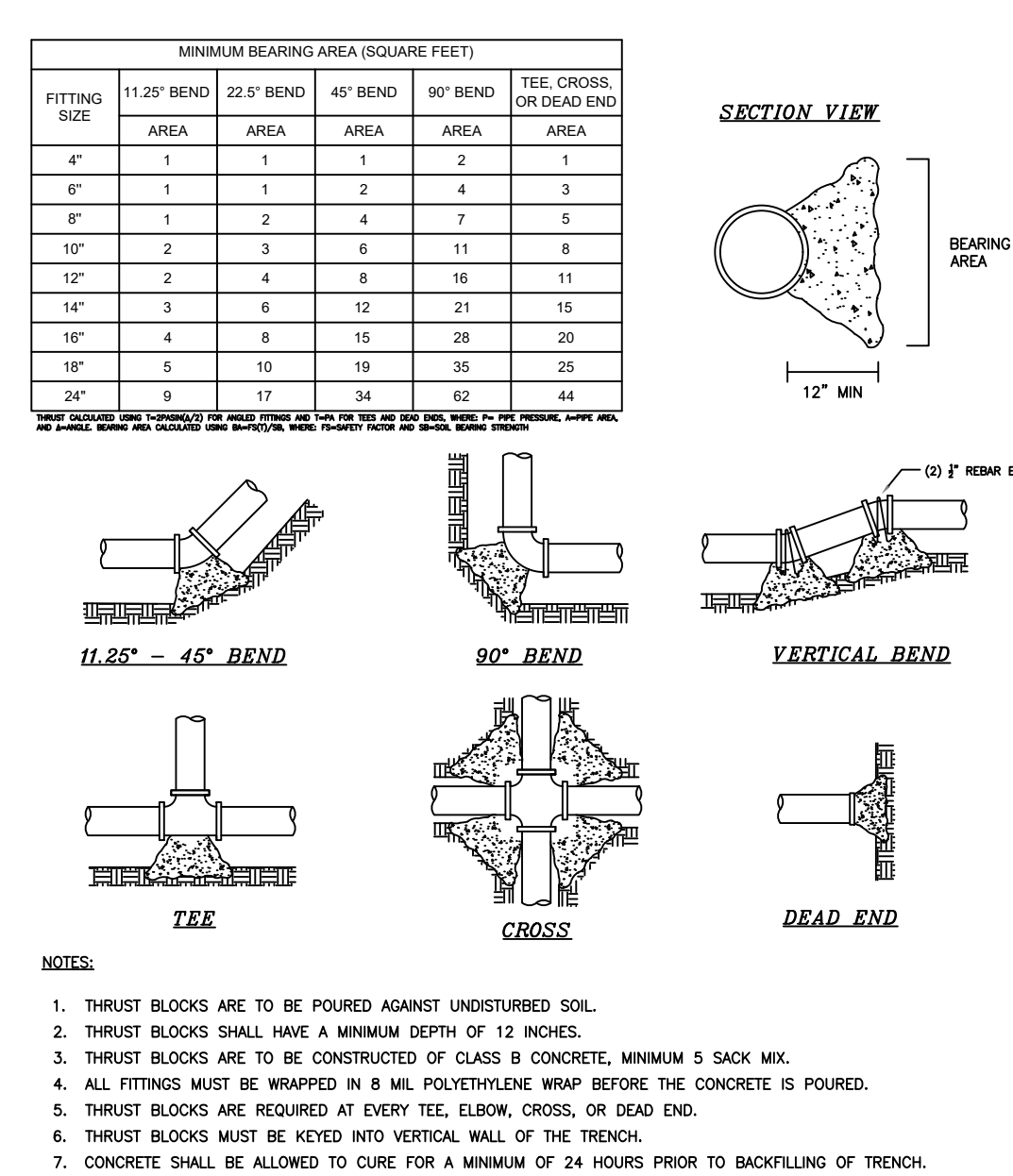
DESIGNED BY: DL			
DRAFTED BY: DL			
CHECKED BY: BC			
DATE: 04/16/2026	REV.	DATE	DESCRIPTION

NEW YORK AVENUE PHASE II - 12" WATER MAIN REPLACEMENT PROJECT

POINT OF CONNECTION DETAILS

SCALE	HOR: NONE	VERT: NONE
-------	-----------	------------

SHEET NUMBER	5
OF 7 SHEETS	
PROJECT NUMBER	C26TDNYASW2



RESTRAINED LENGTH FOR DUCTILE IRON PIPE (FEET)

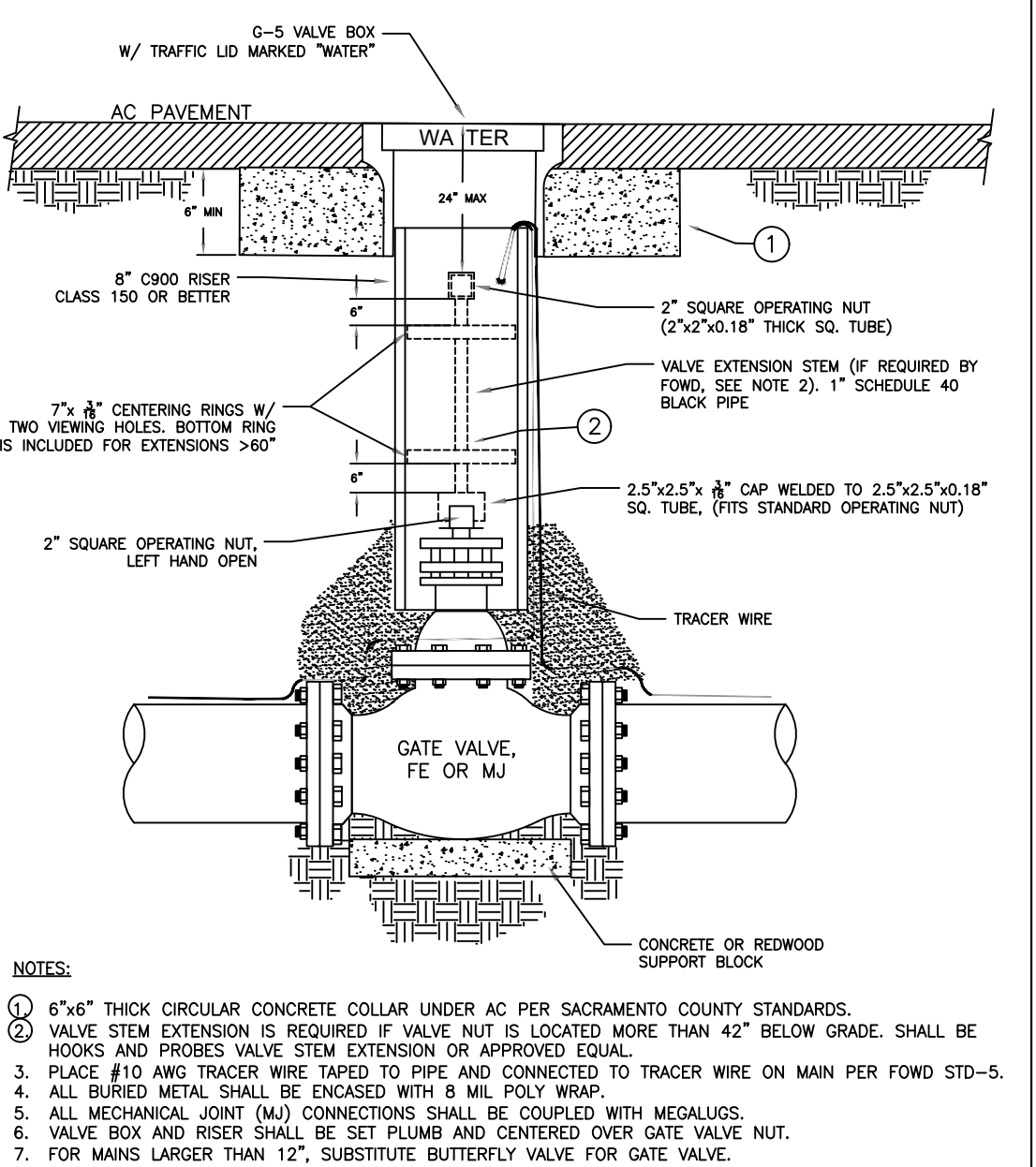
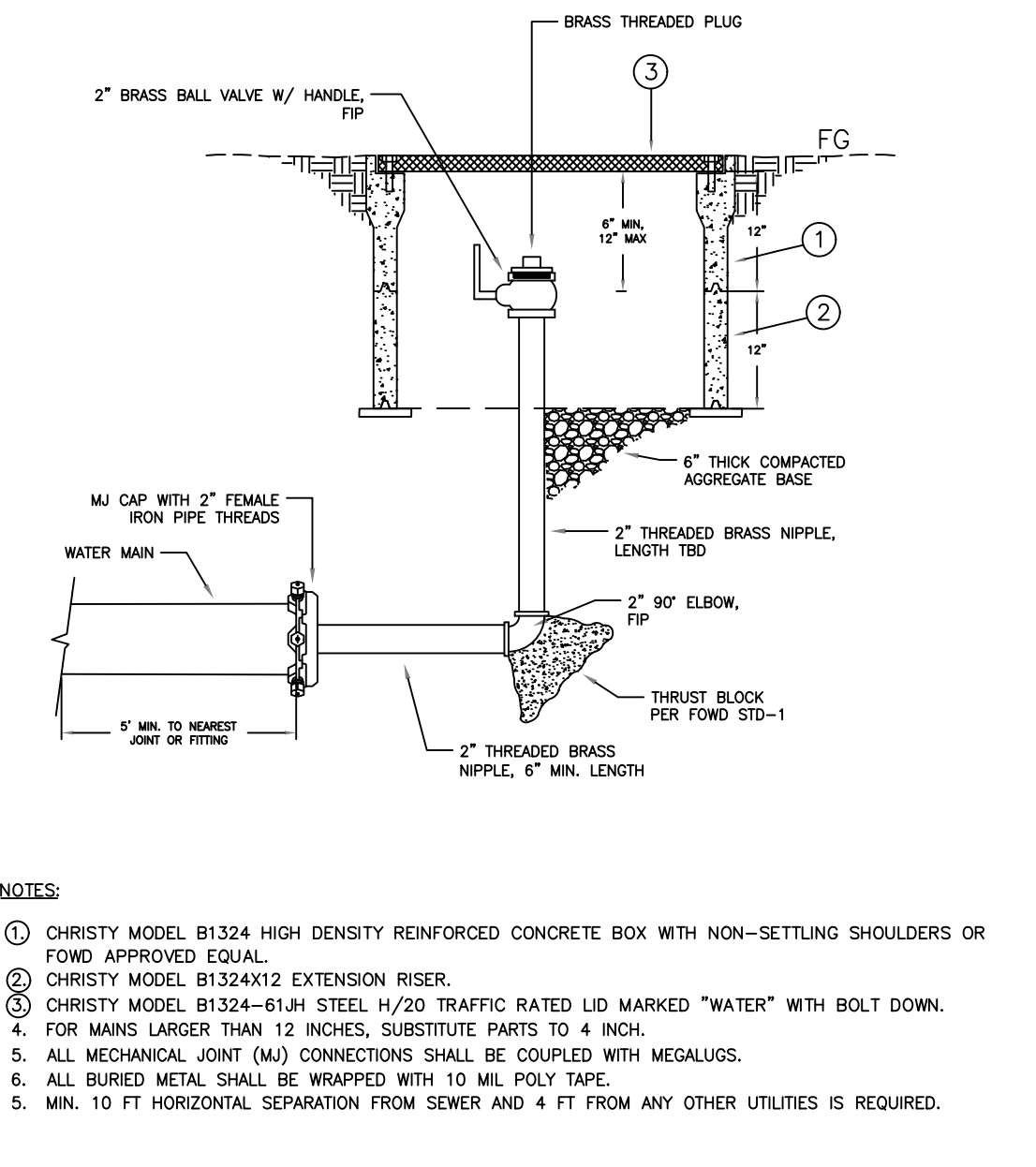
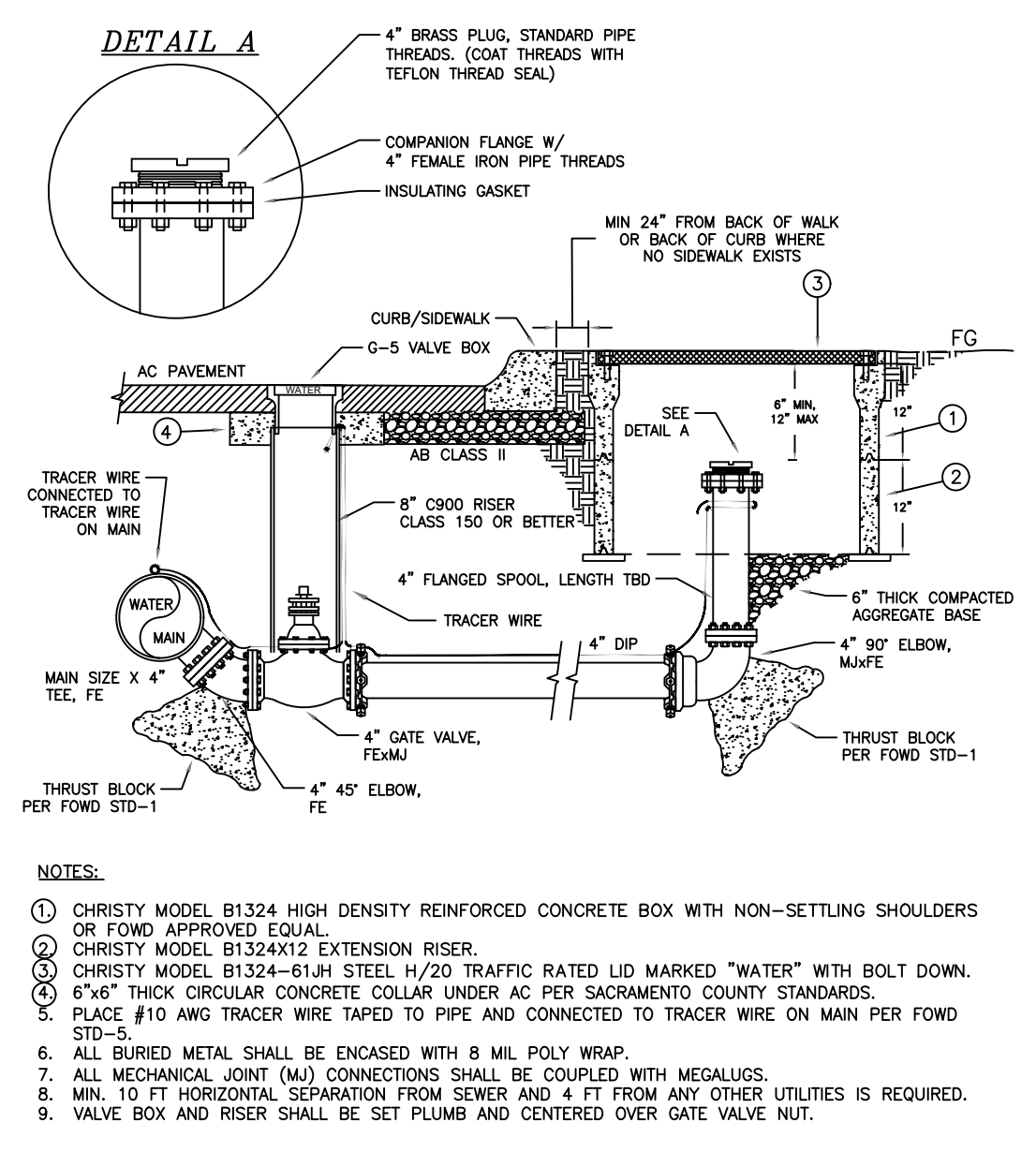
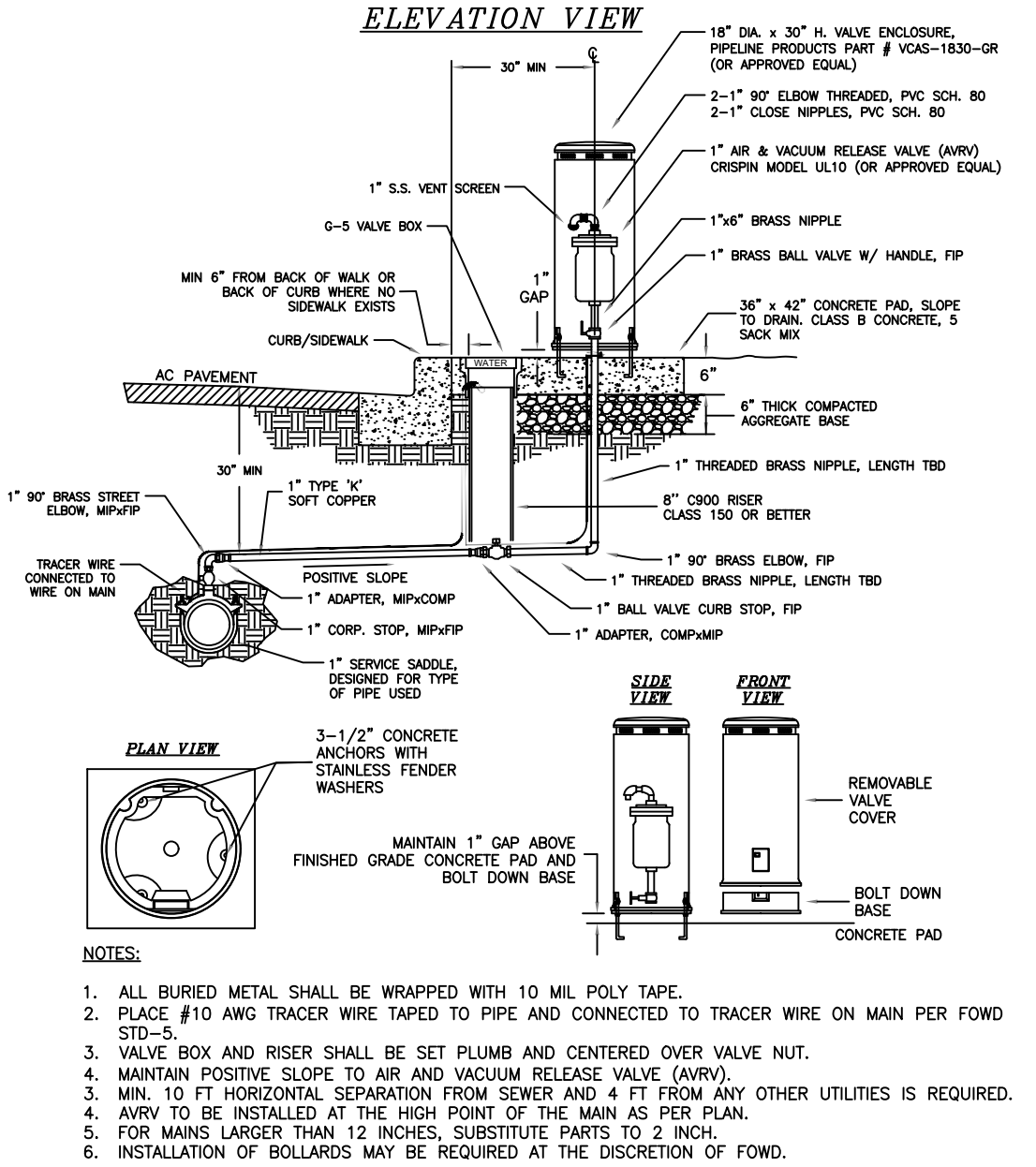
FITTING SIZE	11.25" BEND	22.5" BEND	45" BEND	TEE	DEAD END	VALVE
4"	1	2	4	10	1	20
6"	2	3	6	14	8	28
8"	2	4	8	18	16	37
10"	2	5	9	21	23	45
12"	3	5	10	24	31	52
14"	3	6	12	27	38	60
16"	3	6	13	31	45	67
18"	4	7	14	34	52	74
24"	5	9	18	42	72	94

RESTRAINED LENGTH FOR PVC PIPE (FEET)

FITTING SIZE	11.25" BEND	22.5" BEND	45" BEND	TEE	DEAD END	VALVE
4"	1	2	4	10	1	20
6"	2	3	6	14	8	28
8"	2	4	8	18	16	37
10"	3	5	9	21	23	45
12"	3	6	12	24	31	52
14"	4	7	14	27	38	60
16"	4	8	16	31	45	67
18"	4	8	17	34	52	74
24"	5	10	21	42	72	94

NOTES:

- ALL JOINTS AND FITTINGS WITHIN DESIGNATED RESTRAINED LENGTH SHALL BE RESTRAINED. IF THRUST BLOCKS ARE INSTALLED PER FOWD STD-1, MECHANICAL RESTRAINT IS NOT REQUIRED UNLESS OTHERWISE SPECIFIED.
- RESTRAINING DEVICES FOR MECHANICAL JOINT FITTINGS INCLUDE EBMA 1100 MEGALUG, STAR PIPE PRODUCTS STANBRP 3000, OR SIDA ONE-LOK SLIDE. FOR PVC PIPE, USE EBMA 2009P MEGALUG, STAR PIPE PRODUCTS STANBRP 4000, OR APPROVED EQUAL.
- RESTRAINING DEVICES FOR PUSH-ON JOINTS FOR DUCTILE IRON INCLUDE US PIPE FIELD LOK GASKETS, US PIPE TR FLEX PIPE, OR APPROVED EQUAL. FOR PVC PIPE, USE EBMA 1900 JOINT RESTRAINT, STAR PIPE PRODUCTS SERIES 1100 JOINT RESTRAINT, OR APPROVED EQUAL.
- FOR CROSSES OR TEE FITTINGS, USE RESTRAINED LENGTH FOR 90° BEND FROM THE ABOVE TABLES.
- FOR VERTICAL BENDS, RESTRAINED LENGTH SHALL BE DESIGNED BY THE CIVIL ENGINEER OF RECORD.
- RESTRAINING DEVICES NOT SPECIFIED ON THE PLANS SHALL BE DESIGNED BY THE CIVIL ENGINEER OF RECORD.
- RESTRAINED LENGTHS ARE BASED ON 150 PSI TEST PRESSURE. IF HIGHER PRESSURES ARE ANTICIPATED, THIS TABLE SHALL NOT APPLY AND RESTRAINED LENGTHS SHALL BE DESIGNED BY THE CIVIL ENGINEER OF RECORD.



FAIR OAKS WATER DISTRICT
10326 FAIR OAKS BLVD., FAIR OAKS, CA 95628
OFFICE: (916) 967-5723
WEBSITE: WWW.FOWD.COM

THRUST BLOCK DETAILS

APPROVED: B. CHETOUTI
DRAWN BY: D. LEE
DRAWING: STD-1
REVISED: FEBRUARY 2028
SCALE: NONE

FAIR OAKS WATER DISTRICT
10326 FAIR OAKS BLVD., FAIR OAKS, CA 95628
OFFICE: (916) 967-5723
WEBSITE: WWW.FOWD.COM

PIPE RESTRAINED LENGTH

APPROVED: B. CHETOUTI
DRAWN BY: D. LEE
DRAWING: STD-1
REVISED: FEBRUARY 2028
SCALE: NONE

FAIR OAKS WATER DISTRICT
10326 FAIR OAKS BLVD., FAIR OAKS, CA 95628
OFFICE: (916) 967-5723
WEBSITE: WWW.FOWD.COM

1" & 2" AIR & VACUUM RELEASE VALVE

APPROVED: B. CHETOUTI
DRAWN BY: D. LEE
DRAWING: STD-2
REVISED: FEBRUARY 2028
SCALE: NONE

FAIR OAKS WATER DISTRICT
10326 FAIR OAKS BLVD., FAIR OAKS, CA 95628
OFFICE: (916) 967-5723
WEBSITE: WWW.FOWD.COM

4" IN-LINE BLOW OFF

APPROVED: B. CHETOUTI
DRAWN BY: D. LEE
DRAWING: STD-3
REVISED: FEBRUARY 2028
SCALE: NONE

FAIR OAKS WATER DISTRICT
10326 FAIR OAKS BLVD., FAIR OAKS, CA 95628
OFFICE: (916) 967-5723
WEBSITE: WWW.FOWD.COM

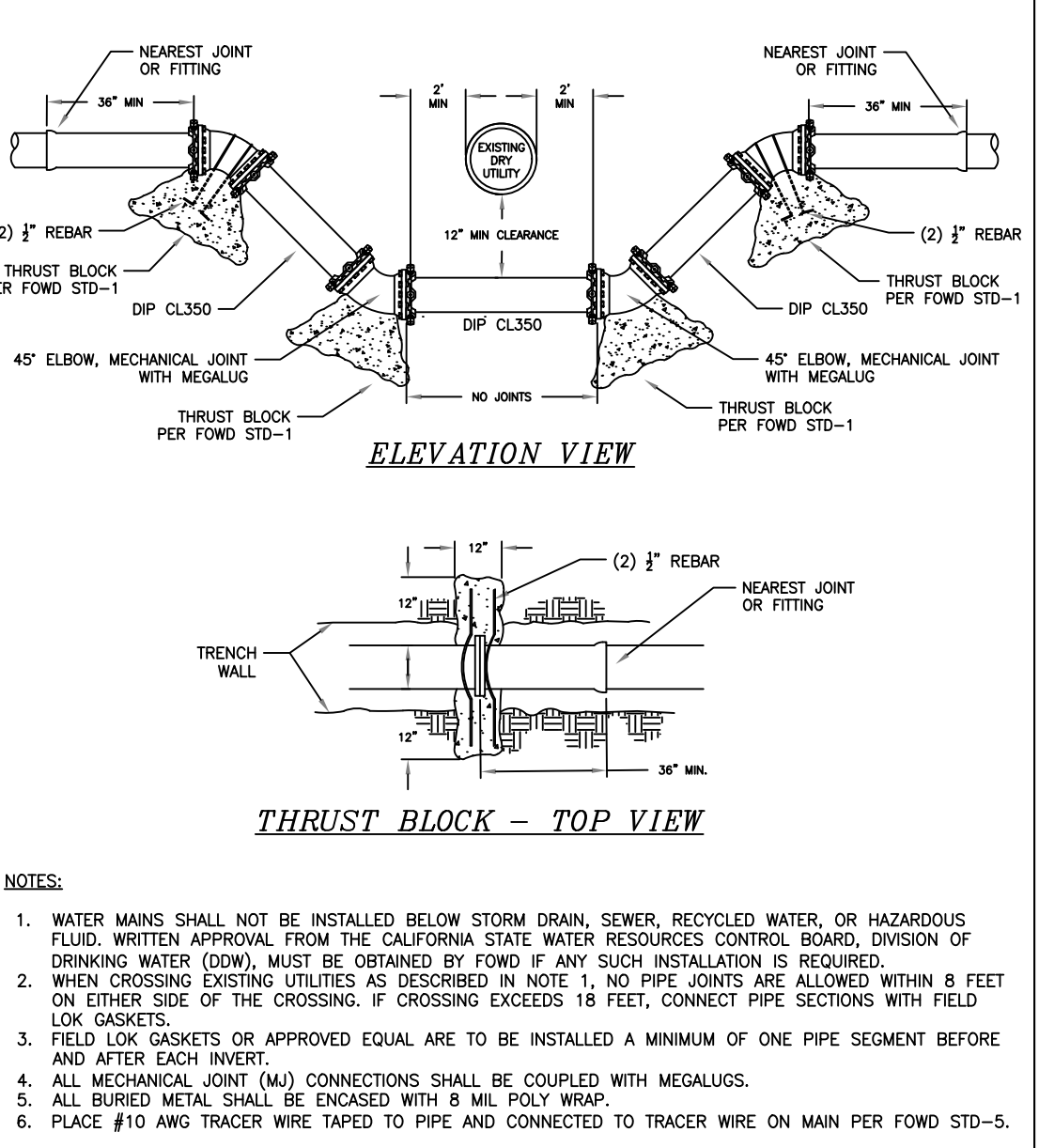
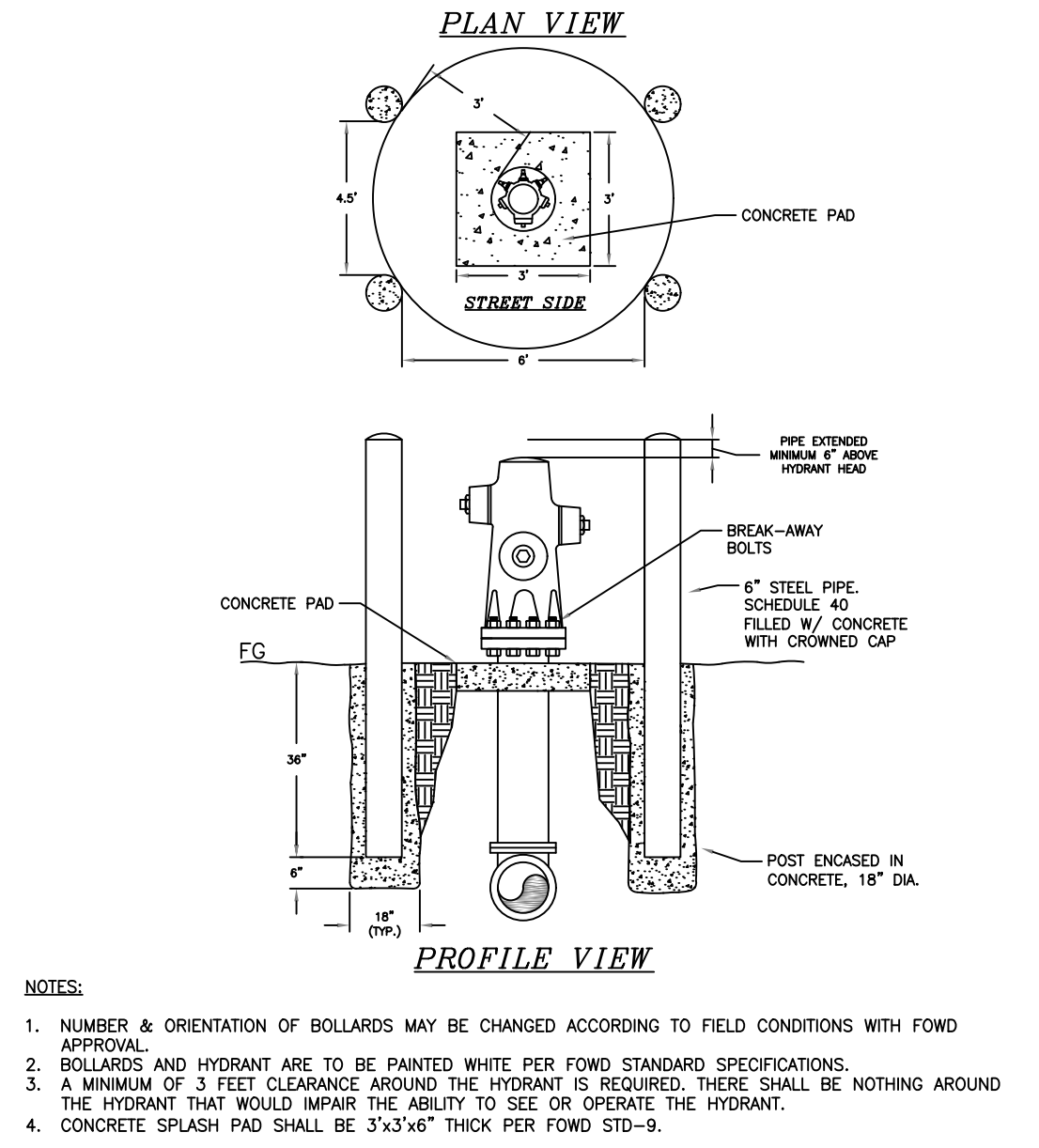
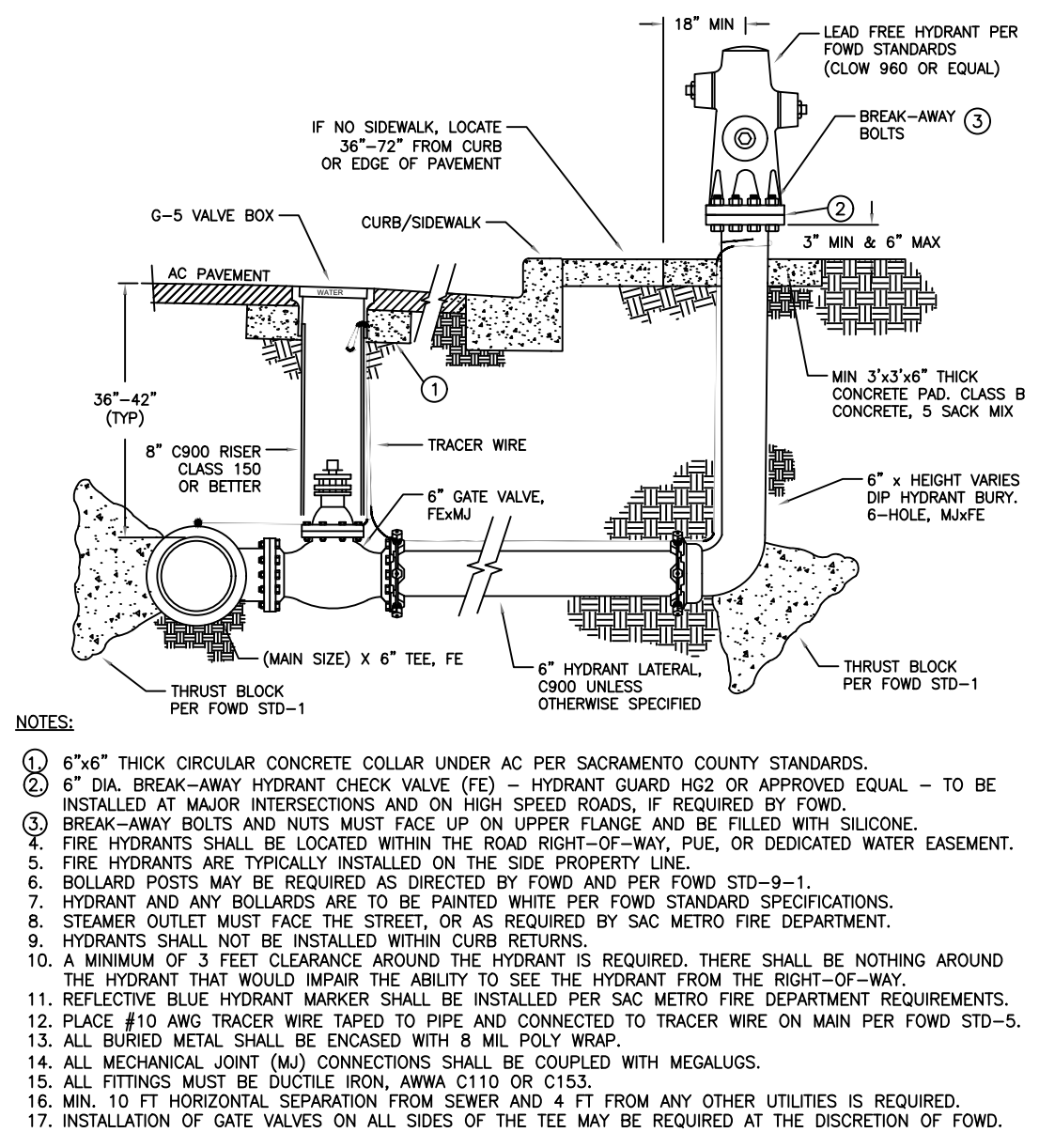
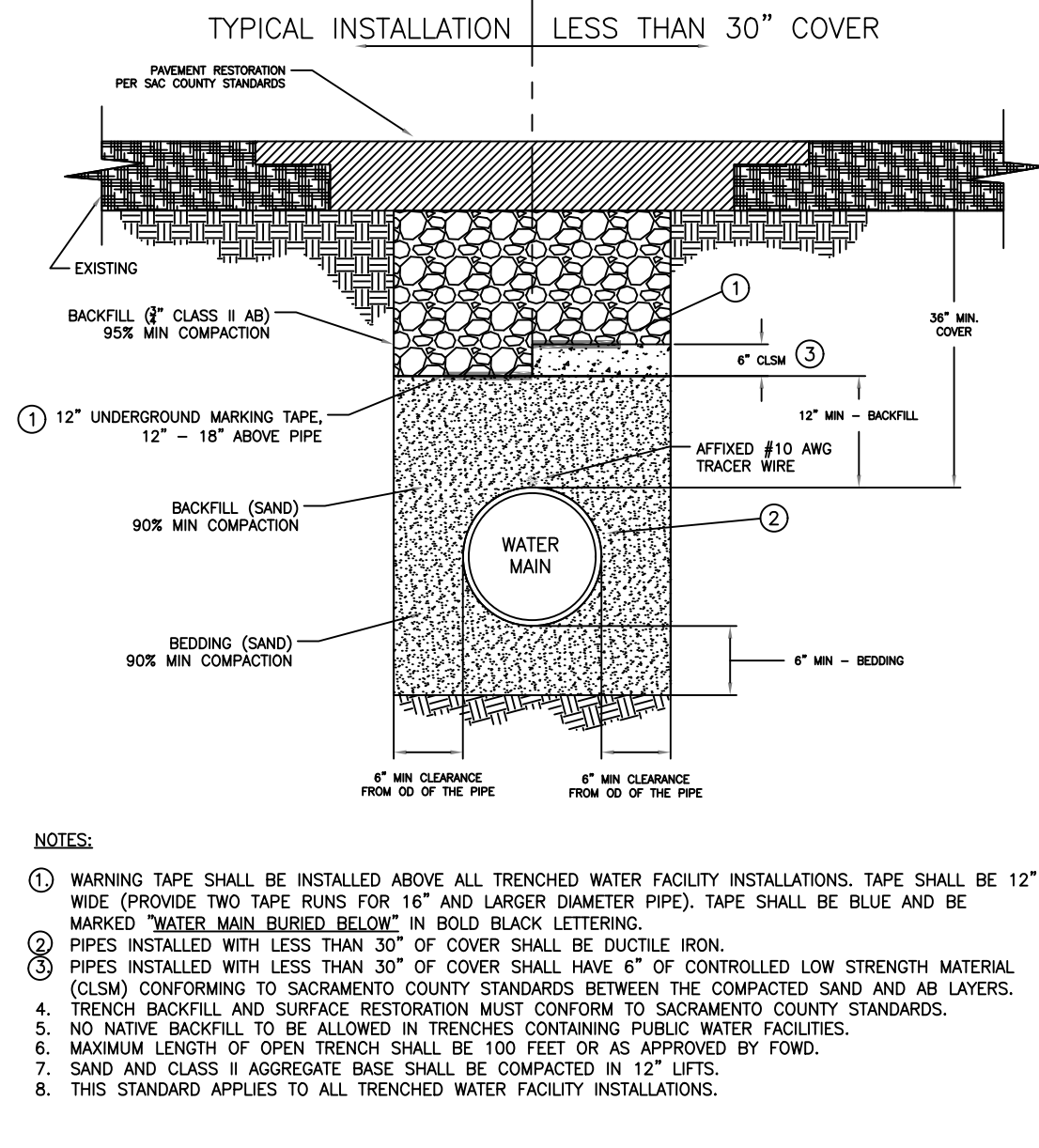
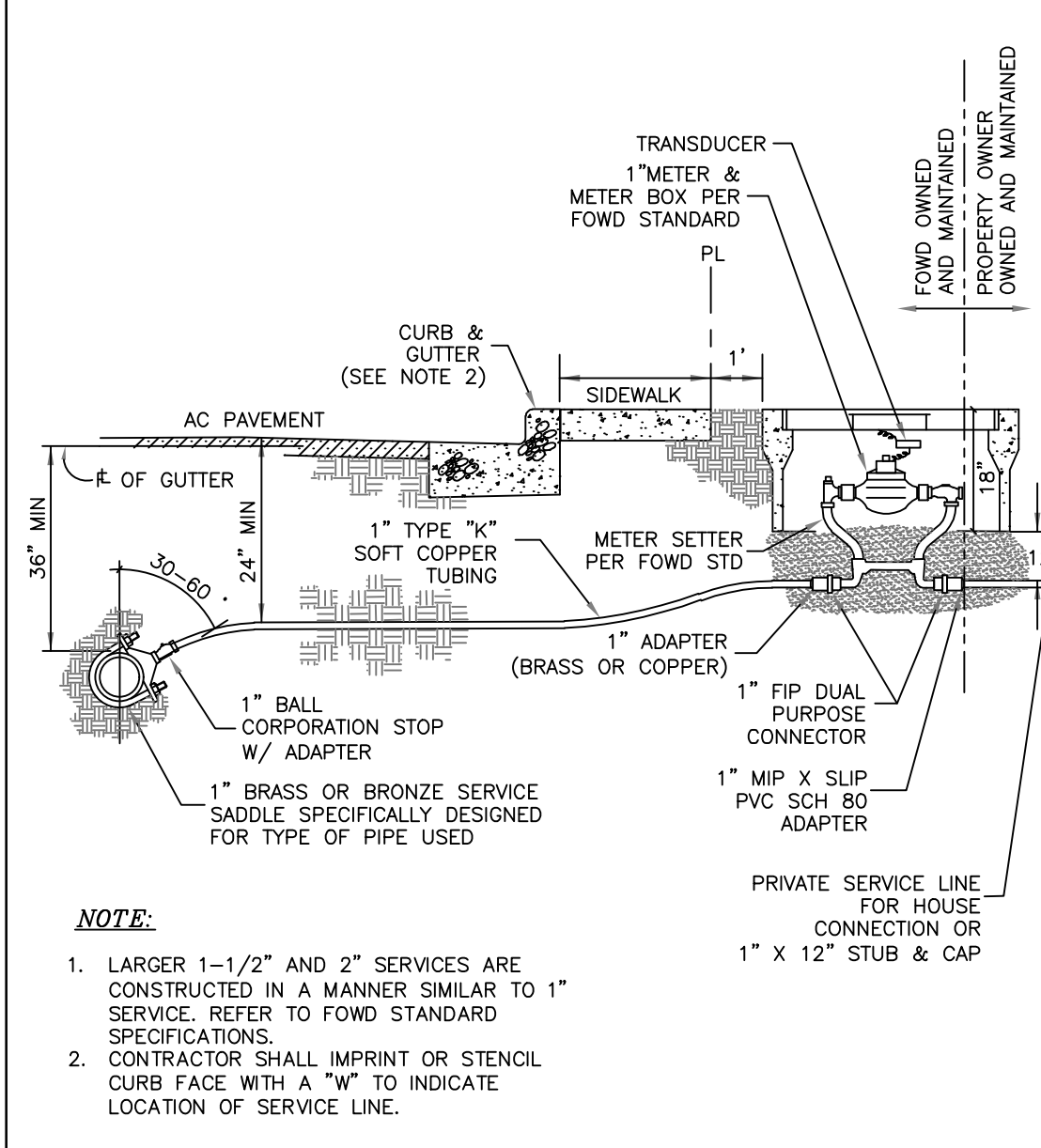
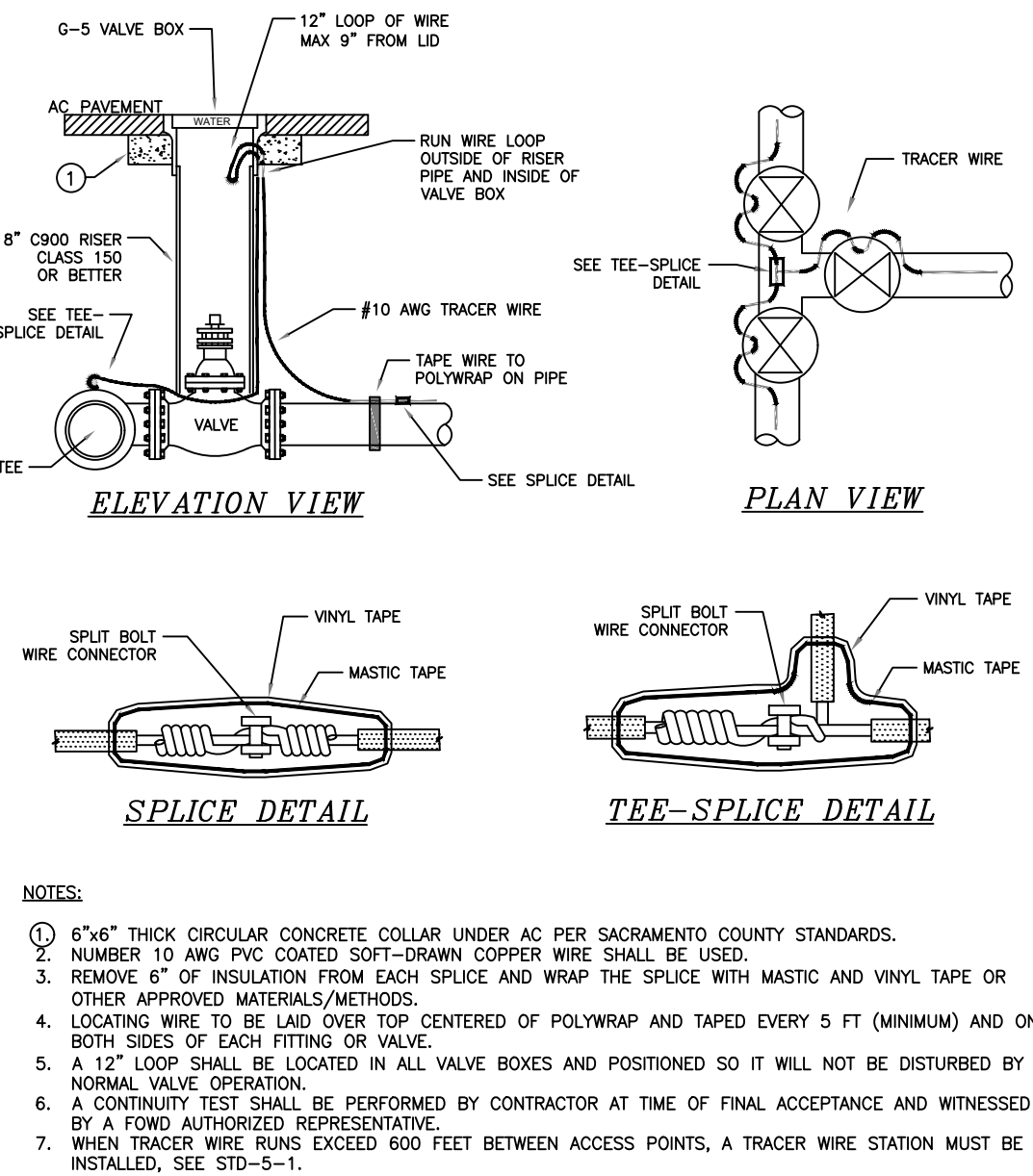
TEMPORARY BLOW OFF FOR CONSTRUCTION

APPROVED: B. CHETOUTI
DRAWN BY: D. LEE
DRAWING: STD-3
REVISED: FEBRUARY 2028
SCALE: NONE

FAIR OAKS WATER DISTRICT
10326 FAIR OAKS BLVD., FAIR OAKS, CA 95628
OFFICE: (916) 967-5723
WEBSITE: WWW.FOWD.COM

IN-LINE GATE VALVE

APPROVED: B. CHETOUTI
DRAWN BY: D. LEE
DRAWING: STD-4
REVISED: FEBRUARY 2028
SCALE: NONE



FAIR OAKS WATER DISTRICT
10326 FAIR OAKS BLVD., FAIR OAKS, CA 95628
OFFICE: (916) 967-5723
WEBSITE: WWW.FOWD.COM

TRACER WIRE INSTALLATION

APPROVED: B. CHETOUTI
DRAWN BY: D. LEE
DRAWING: STD-5
REVISED: FEBRUARY 2028
SCALE: NONE

FAIR OAKS WATER DISTRICT
10326 FAIR OAKS BLVD., FAIR OAKS, CA 95628
OFFICE: (916) 967-5723
WEBSITE: WWW.FOWD.COM

1" SERVICE/METER INSTALLATION

APPROVED: B. CHETOUTI
DRAWN BY: D. LEE
DRAWING: STD-7
REVISED: FEBRUARY 2028
SCALE: NONE

FAIR OAKS WATER DISTRICT
10326 FAIR OAKS BLVD., FAIR OAKS, CA 95628
OFFICE: (916) 967-5723
WEBSITE: WWW.FOWD.COM

TRENCH DETAIL

APPROVED: B. CHETOUTI
DRAWN BY: D. LEE
DRAWING: STD-8
REVISED: FEBRUARY 2028
SCALE: NONE

FAIR OAKS WATER DISTRICT
10326 FAIR OAKS BLVD., FAIR OAKS, CA 95628
OFFICE: (916) 967-5723
WEBSITE: WWW.FOWD.COM

6" WET BARREL FIRE HYDRANT

APPROVED: B. CHETOUTI
DRAWN BY: D. LEE
DRAWING: STD-9
REVISED: FEBRUARY 2028
SCALE: NONE

FAIR OAKS WATER DISTRICT
10326 FAIR OAKS BLVD., FAIR OAKS, CA 95628
OFFICE: (916) 967-5723
WEBSITE: WWW.FOWD.COM

FIRE HYDRANT BOLLARDS

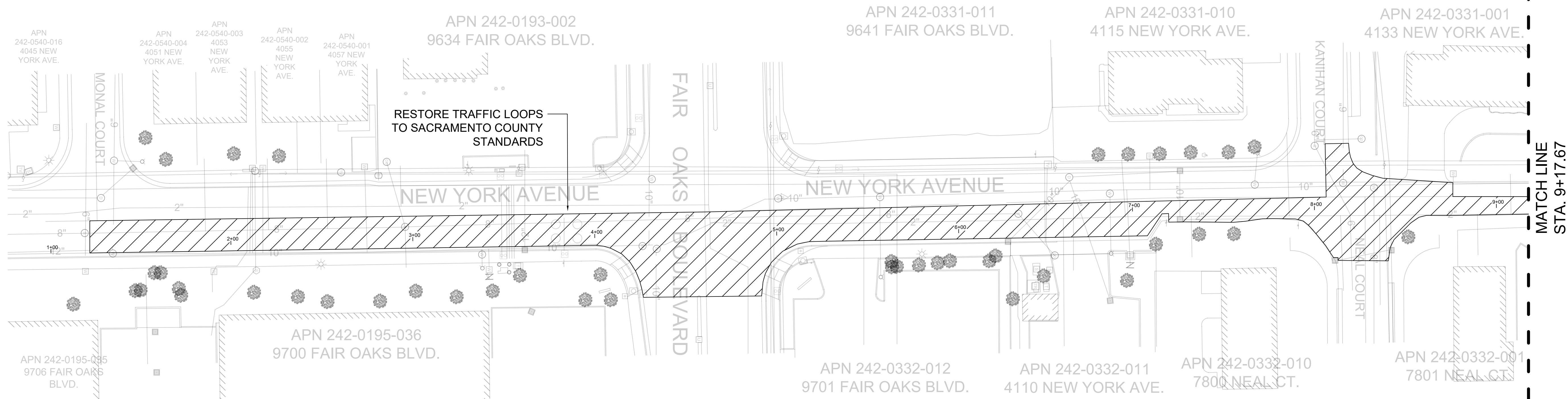
APPROVED: B. CHETOUTI
DRAWN BY: D. LEE
DRAWING: STD-9-1
REVISED: FEBRUARY 2028
SCALE: NONE

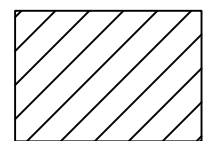
FAIR OAKS WATER DISTRICT
10326 FAIR OAKS BLVD., FAIR OAKS, CA 95628
OFFICE: (916) 967-5723
WEBSITE: WWW.FOWD.COM

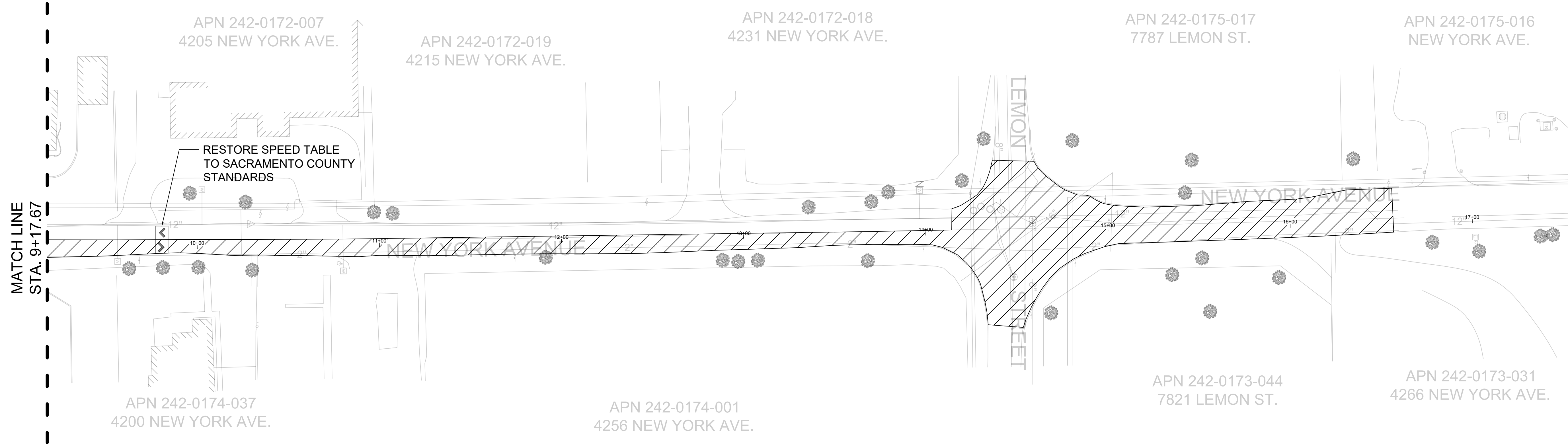
UTILITY CROSSING INVERT DETAIL

APPROVED: B. CHETOUTI
DRAWN BY: D. LEE
DRAWING: STD-11
REVISED: FEBRUARY 2028
SCALE: NONE

ISSUED FOR BID



 PAVEMENT RESTORATION EXTENTS
(TOTAL 29,457 SF)



- NOTES:
1. PAVEMENT RESTORATION WILL BE TYPE II SLURRY FROM CENTERLINE TO LIP OF GUTTER PER SACRAMENTO COUNTY SPECIFICATIONS.
 2. TRENCH BACKFILL AND SURFACE RESTORATION WILL BE PER SACRAMENTO COUNTY SPECIFICATIONS.
 3. THE CONTRACTOR SHALL RESTORE ALL POTHOLES THAT OCCURRED DURING THE DESIGN PHASE IN ACCORDANCE WITH SACRAMENTO COUNTY SPECIFICATIONS, INCLUDING THOSE LOCATED OUTSIDE THE DEFINED PAVING LIMITS.

ISSUED FOR BID

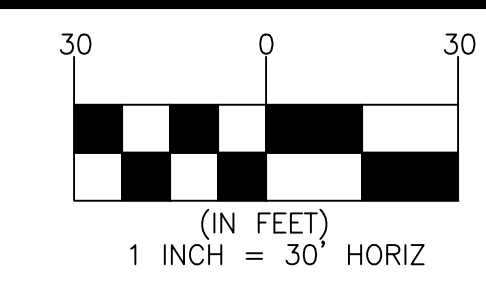


FAIR OAKS WATER DISTRICT
10326 FAIR OAKS BLVD.,
FAIR OAKS, CA 95628
(916) 967-5723

DESIGNED BY: DL			
DRAFTED BY: DL			
CHECKED BY: BC			
DATE: 04/16/2026	REV.	DATE	DESCRIPTION

NEW YORK AVENUE PHASE II - 12" WATER MAIN
REPLACEMENT PROJECT
PAVING PLAN STA. 1+25.63 TO 16+50.76

SCALE



SHEET NUMBER 7
OF 7 SHEETS
PROJECT NUMBER C26TDNYASW2